

SATAraid™
Serial ATA
RAID Management Software



05/12/04

Silicon Image, Inc.

1060 East Arques Ave.
Sunnyvale CA 94085

(408) 616-4000

www.siliconimage.com



Copyright © 2003, Silicon Image, Inc. All rights reserved. No part of this publication may be reproduced, transmitted, transcribed, or translated into any language or computer format, in any form or by any means without prior written permission of:

Silicon Image, Inc.
1060 East Arques Ave.
Sunnyvale CA 94085

Silicon Image, Inc. reserves the right to make changes to the product(s) or specifications to improve performance, reliability, or manufacturability. Information furnished is believed to be accurate and reliable, but Silicon Image, Inc. shall not be responsible for any errors that may appear in this document. Silicon Image, Inc. makes no commitment to update or keep current the information contained in this document.

However, no responsibility is assumed for its use; nor any infringement of patents or other rights of third parties which may result from its use. No liability is assumed as a result of their use or application. No rights under any patent accompany the sale of any such product(s) or information.

Silicon Image, Inc. products are not designed or intended for use in Life Support Systems. A Life Support System is a product or system intended to support or sustain life, which if it fails, can be reasonably expected to result in significant personal injury or death. If Buyer or any of its direct or indirect customers applies any product purchased or licensed from Silicon Image, Inc. to any such unauthorized use, Buyer shall indemnify and hold Silicon Image, Inc., its affiliates and their respective suppliers, harmless against all claims, costs, damages and expenses arising directly or indirectly, out of any such unintended or unauthorized use, even if such claims alleges that Silicon Image, Inc. or any other person or entity was negligent in designing or manufacturing the product.

Specifications are subject to change without notice.

SATARaid is a trademark of Silicon Image, Inc. JAVA is a trademark of Sun Microsystems, Inc. Windows is a trademark of Microsoft Corp. for their family of computer operating systems.

Revision History:

Revision	Comment	Date
1.00	Initial creation of document.	09/26/03
1.01	Added safely remove device feature and updated graph images.	01/22/04
1.02	Replaced some GUI screen captures (RAID member icon has been changed) and added new feature description.	04/23/04
1.03	Added "Deleting Invalid RAID Drive" section and updated screen shots.	05/12/04

Table of Contents

1	Welcome.....	5
1.1	SATARaid Features	5
2	An Introduction to RAID	6
3	Installing Drivers for Windows Server 2003/XP/2000 /98/NT	7
4	JAVA 2 Runtime Environment Installation	8
5	SATARaid GUI Installation	10
6	Creating and Deleting RAID Sets with BIOS Utility	11
6.1	BIOS Utility Overview	11
6.1.1	Main Menu.....	12
6.1.2	Help Window	12
6.1.3	Physical Drive Information.....	12
6.1.4	Logical Drive Information.....	12
6.1.5	Command Line	12
6.2	Creating RAID Sets and Spare Drive	13
6.3	Deleting RAID Sets and Spare Drive.....	14
6.4	Rebuild RAID 1 Set	15
6.5	Resolving Conflicts	16
6.6	Deleting Invalid RAID Drive.....	18
6.7	Low Level Formatting.....	18
6.8	Logical Drive Information.....	19
7	Allocating Partitions	20
7.1	Windows Server 2003 & XP & 2000.....	20
7.1.1	Creating the Partitions	21
7.2	Windows NT	25
7.2.1	Creating the Partitions	26
7.3	Windows 98 & Me	28
8	SATARaid GUI Overview	32
8.1	Devices and Information Windows	32
8.2	Event Viewer and Events Windows	34
8.3	SATARaid Toolbar and Menu Commands	34
8.3.1	RAID Management.....	34
8.3.2	System View.....	35
8.3.3	Configure SATARaid	35
8.3.4	Send Configuration.....	35
8.3.5	Save Configuration	35
8.3.6	Copy Configuration.....	35
8.3.7	SATARaid Help	35
8.3.8	Exit	35
8.3.9	About SATARaid	35

9	SATAraid Configuration	36
10	RAID Set Management Under Windows 2000/XP/Server 2003	42
10.1	Creating RAID Sets	43
10.1.1	Creating a RAID 1 Set	43
10.1.2	Creating a RAID 0 Set	46
10.1.3	Creating a RAID 10 Set	47
10.2	Deleting RAID Sets	48
10.3	Modifying RAID Sets	50
10.3.1	Set Rebuild Rate for RAID Set 1/10	50
10.3.2	Add New Members to RAID Set 1/10	53
10.4	Creating a Spare RAID 1 Drive	56
10.5	Deleting a Spare RAID 1 Drive	58

1 Welcome

Silicon Image's SATARaid™ software provides Serial ATA RAID0 (Striping), RAID1 (Mirroring) and RAID10 (Striping and Mirroring) functionality to enhance the industry's leading PCI-to-SATA host controller products. Two major challenges facing the storage industry today are keeping pace with the increasing performance demands of computer systems by improving disk I/O throughput and providing data accessibility in the face of hard disk failures. With Silicon Image Serial ATA host controller and SATARaid, both of these problems are solved.

SATARaid software provides a Graphical User Interface (GUI) for easy-to-use configurations of the RAID Sets.

1.1 SATARaid Features

- RAID 0, RAID 1, and RAID 10 Sets are supported
- Under Win 2000/XP/Server 2003 only, RAID Sets can be created and deleted without exiting Windows
- Hot Spare and On-line Mirror Rebuilding
- System GUI Monitoring Utility:
 - Displays/Logs/Alerts Users to Vital RAID Set Information
 - Manages RAID Set Functions (configures, rebuilds, etc.,)
- RAID Set Accommodates Multiple Size HDDs
- HDDs Function Normally When Not in RAID Sets
- Supports safely remove HDDs when not in RAID Sets and not a spare drive
- Adjustable Stripe Size for RAID 0
- Uses the Self-Monitoring, Analysis, and Reporting Technology (SMART) feature in the attached drives for automatic notification of imminent drive failures.
- Can be configured to automatically email RAID Set system events and failure reports.
- Automatically Selects Highest Available Transfer Speed for All SATA Devices. Supports the following:
 - UDMA up to 150MB/Sec.
 - Up to 4 SATA devices
 - ACPI and SATA 1.0

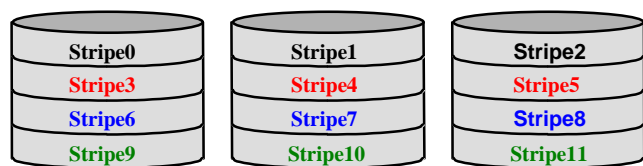
2 An Introduction to RAID

RAID - Redundant Array of Independent Disks

RAID technology manages multiple disk drives to enhance I/O performance and provide redundancy in order to withstand the failure of any individual member, without the loss of data. There are many different methods of implementation for RAID, with each having advantages and disadvantages. Raid levels or set types are given a numerical designator that defines its implementation such as RAID 0 or RAID 1. SATAraid provides support for three RAID Set types: Striped (RAID 0) , Mirrored (RAID 1), and RAID 10 Mirrored/Striped. Other RAID types are not supported by SATAraid software and thus are not discussed.

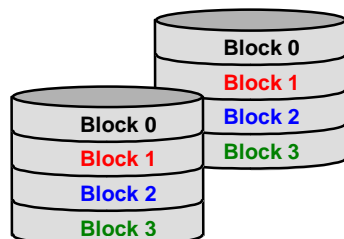
Disk Striping (RAID 0)

Striping is a performance-oriented, non-redundant data mapping technique. While Striping is discussed as a RAID Set type, it is does not provide any fault tolerance. With modern SATA and ATA bus mastering technology, multiple I/O operations can be performed in parallel, enhancing data throughput. Striping arrays use multiple disks to form a larger virtual disk. The figure below illustrates a three-disk stripe set. Stripe one is written to disk one, stripe two to disk two, and so forth. RAID 0 sets can be comprised of two, three, or four drives.



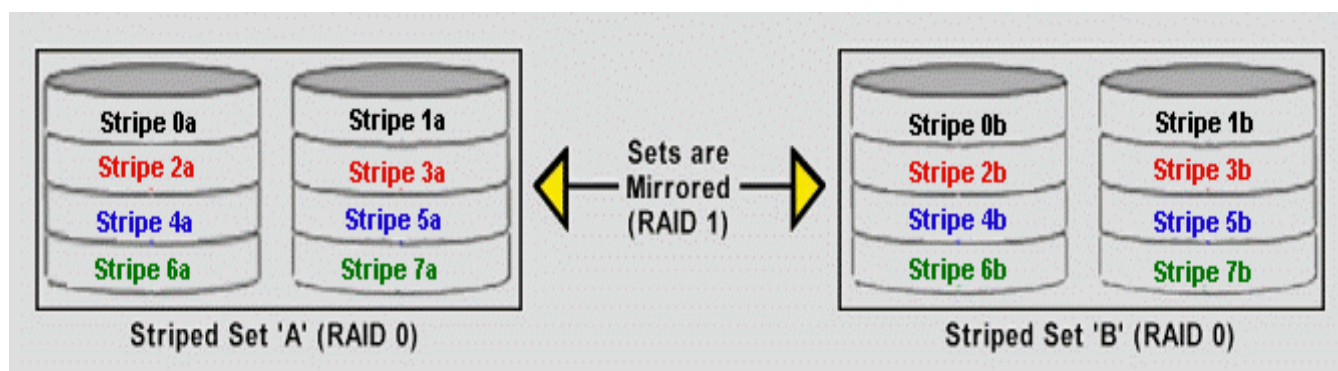
Disk Mirroring (RAID 1)

Disk mirroring creates an identical twin for a selected disk by having the data simultaneously written to two disks. This redundancy provides instantaneous protection from a single disk failure. If a read failure occurs on one drive, the system reads the data from the other drive. RAID 1 sets are comprised of two drives. A third drive can be allocated as a spare in case one of the drives in the set fails.



Disk Mirroring and Striping (RAID 10)

RAID 10 combines the features of both RAID 0 and RAID 1. Performance is provided through the use of Striping (RAID 0), while adding the fault tolerance of Mirroring (RAID 1). The implementation of RAID 10 requires four drives. The drives are assigned as two sets of striped pairs.



The data is written to RAID Set A, which is striped (RAID 0). This allows maximum speed. The data is then mirrored to another RAID 0 striped set, which is Set B in the figure above. This provides data redundancy (RAID 1), and thus increased data security.

Under certain circumstances, a RAID 10 set can sustain multiple simultaneous drive failures.

3 Installing Drivers for Windows Server 2003/XP/2000 /98/NT

Before installing the SATARaid software, Silicon Image Serial ATA host adapter driver must be installed. When Windows detects the newly installed SATA host adapter, it will open a Driver Installation Wizard. Click on the Next buttons until the wizard prompts for the location of the driver. Insert the Silicon Image SATA host adapter driver CD into the computer's CD-ROM drive and click on the Browse button. Select the directory on the CD in which the driver resides and click OK.



Click the Next button. A window will be displayed to verify proper installation of the host adapter driver. Click Finish. When prompted to restart the computer, click Yes.

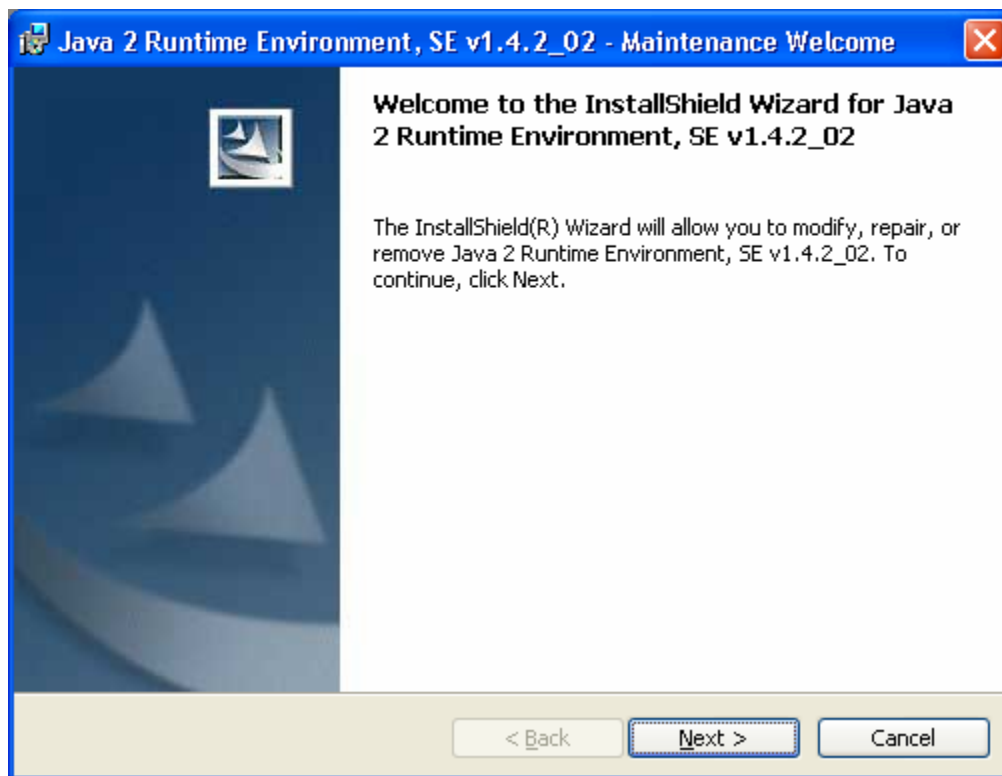
4 JAVA 2 Runtime Environment Installation

The Java 2 Runtime Environment is required for the SATARaid GUI. The Java 2 Runtime Installer and executable package must be downloaded from the Sun Microsystems website at <http://java.sun.com/j2se/downloads.html>. The computer must have an Internet connection set up before installation can proceed.

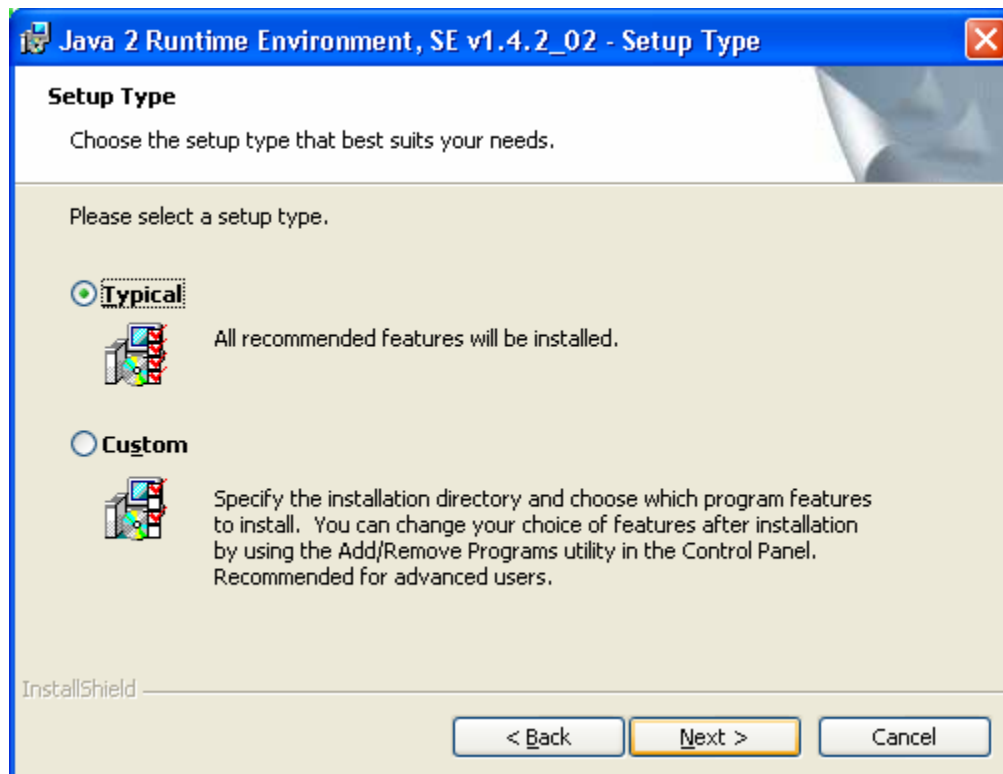
Save the installer file to a known location, such as the My Documents folder. Using Windows Explorer or by clicking on the My Computer icon on the desktop, select the installation file and open it. The installation will begin. The installer program will download the needed files from the Internet.



When a window appears asking for acceptance the license agreement, select *I accept the terms of this license agreement* and click Next.



Choose the Typical setup type and click Next.

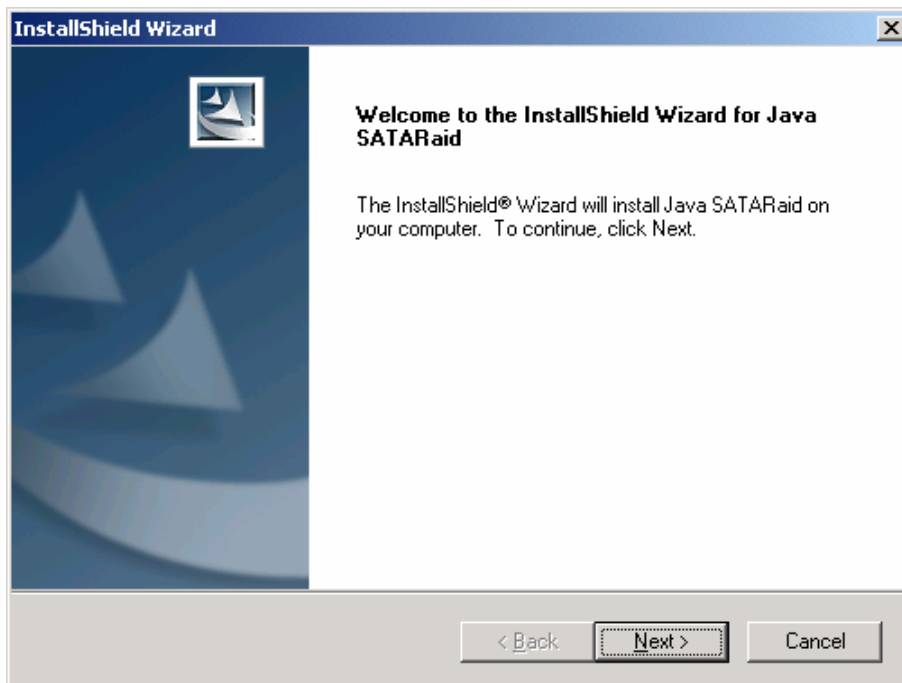


When the installation completes, click Finish. Restart the computer when prompted.

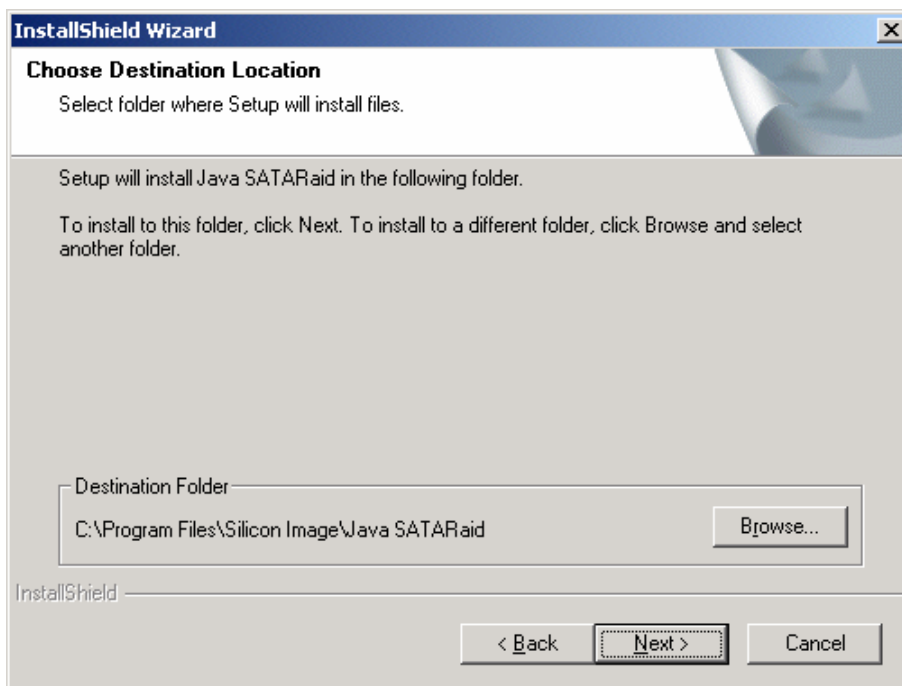
5 SATARaid GUI Installation

Insert the Silicon Image SATARaid Installation CD into the computer's CD-ROM drive. Using Windows Explorer or by clicking on the My Computer icon on the desktop, display the contents of the CD-ROM. The SATARaid GUI Installation program is named *Java SATARaid.exe*. Select this file and open it. The installation will begin.

Click the Next button when the Welcome window appears.



Click the Next button to install the SATARaid program in the default directory (recommended). An alternate directory may be selected if desired.



Click the Finish button to complete the installation.

6 Creating and Deleting RAID Sets with BIOS Utility

Creating and deleting RAID sets must be performed in the BIOS for operating systems other than Windows 2000, XP, and Server 2003. For 2000, XP, and Server 2003, RAID sets can be created and managed by either the BIOS utility or the SATARaid GUI. See section 10 *RAID Set Management Under Windows 2000/XP/Server 2003* for information on configuring RAID Sets using the SATARaid GUI.

6.1 BIOS Utility Overview

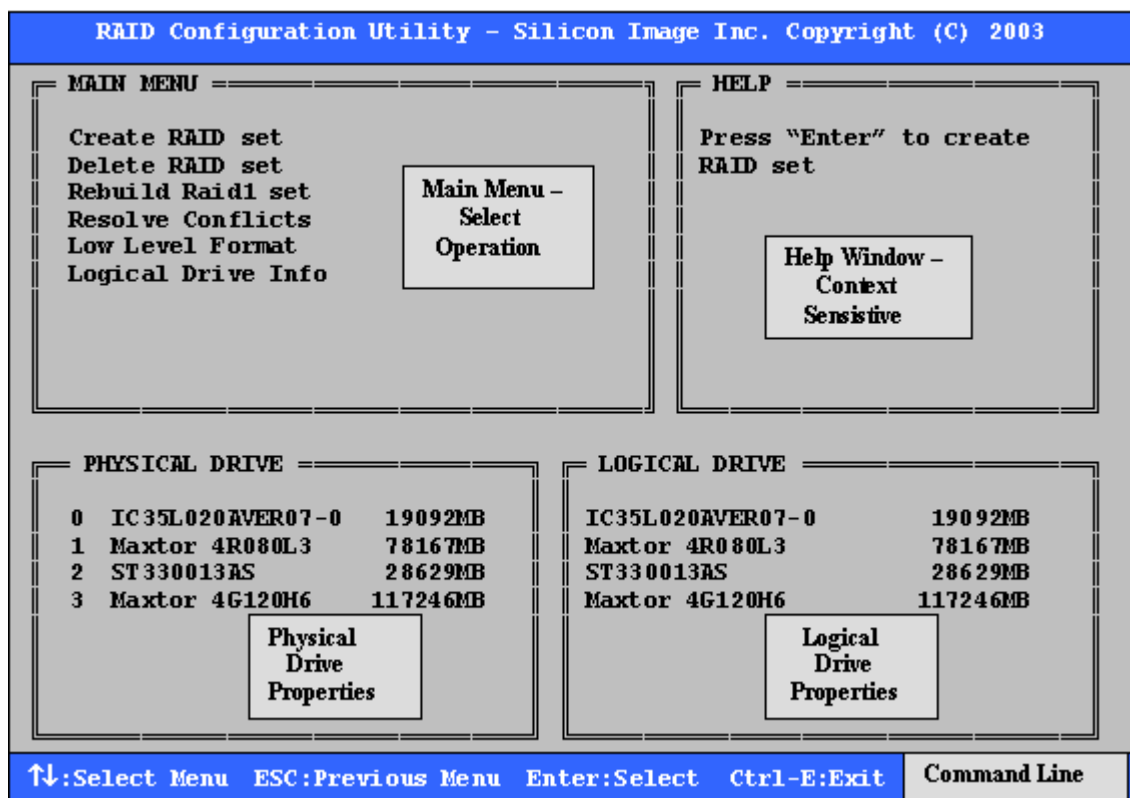
During bootup, a screen similar to that below will appear for about 5 seconds. Press CTRL+S or the F4 key to enter the BIOS RAID utility.

```
SiI 3124 SATARaid BIOS Version 6.0.13
Copyright (C) 1997-2004 Silicon Image, Inc.

Press <Ctrl+S> or F4 to enter RAID utility
0  IC35L020AVER07-0      19092 MB
1  Maxtor 4R080L3        78167MB
2  ST330013AS            28629MB
3  Maxtor 4G120H6        117246MB

SiI Raid10 set           IC35L020AVER07-0
                        Maxtor 4R080L3
                        ST330013AS
                        Maxtor 4G120H6
```

The RAID Utility menu screen will be displayed. A brief description of each section is presented on the next page.



6.1.1 Main Menu

The Main Menu in the upper left corner is used to choose the operation to be performed. The selections are:

- Create RAID Set
- Delete RAID Set
- Rebuild RAID1 Set
- Resolve Conflicts
- Low Level Format
- Logical Drive Info

Create RAID Set is used to create a new RAID Set or for allocating spare drives to a RAID 1 set.

Delete RAID Set is used to delete a RAID Set or to deallocate a spare RAID 1 drive.

Rebuild RAID 1 Set is used to initiate the rebuild of a RAID 1 set after, for example, a drive in the Set has been replaced.

Resolve Conflicts is used to automatically find the member drives of a RAID set which has been disrupted (physical drives swapped around, for example) and restore the Set to proper operation.

Low Level Format allows a single drive to have its data completely wiped out. Drives assigned to Sets or allocated as spares cannot be low level formatted.

Logical Drive Info shows the current configuration of each RAID set, allocated spare, and unallocated physical drive attached to the SATA host adapter.

These operations are detailed in the pages that follow.

6.1.2 Help Window

This window displays context-sensitive help and status messages.

6.1.3 Physical Drive Information

This window displays the model number and capacities of the drives physically attached to the SATA host adapter.

6.1.4 Logical Drive Information

This window displays a list of devices reported to the system BIOS.

6.1.5 Command Line

The bottom line of the display lists the currently active command keys:

- Up and Down arrows select the menu item or action
- ESC takes the user to the previous menu
- Enter selects the highlighted choice
- Ctrl-E exits the utility

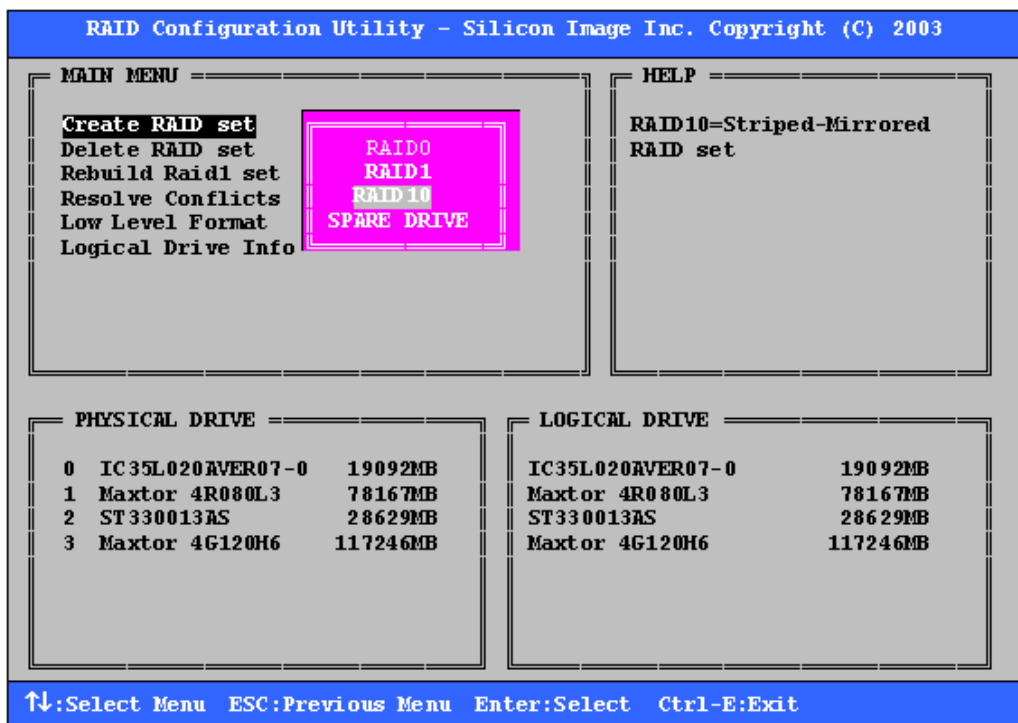
Other keys may be active depending upon the currently selected action.

6.2 Creating RAID Sets and Spare Drive

As previously discussed, the Silicon Image SATA host adapter supports RAID 0, 1, and 10 configurations. The selection of the RAID level to be used should be based upon factors including performance, data security, and number of drives available. It is best to carefully consider the long-term role of the system and plan the data storage strategy appropriately.

Silicon Image has made the creation of RAID sets very simple. They can be created either automatically or to allow the greatest flexibility, manually.

1. Select "Create RAID Set."
2. Choose a RAID 0 Striped, a RAID 1 Mirrored, or a RAID 10 combination set.
3. Select Automatically or Manually configuration of the RAID Set.
4. If manual configuration is selected, the chunk size of Striped Sets can be selected. For Mirrored Sets, the Source and Target drives can be selected.
5. The message "Are You Sure?" will display before completing the configuration. Answer "N" to abort the creation of the new RAID set, or "Y" to proceed with the RAID set creation.

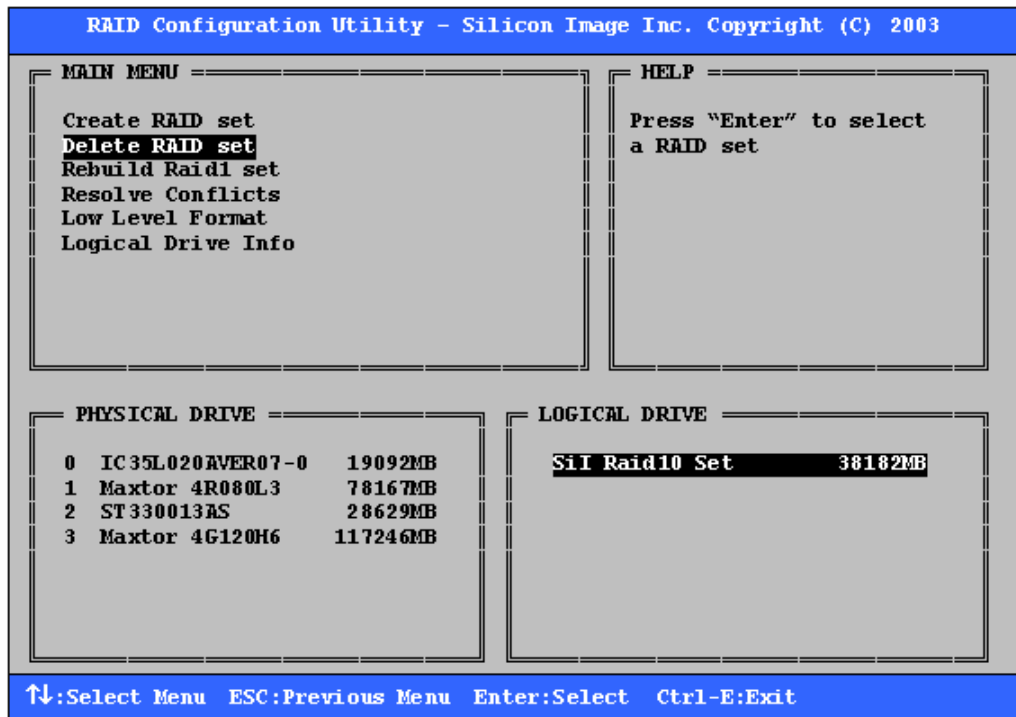


The Create RAID set option is also used to allocate a spare drive to a RAID 1 set. This spare drive can be allocated to the set using the SATARaid GUI in the event of a failure of one of the drives in the set. To allocate a spare drive, follow the procedure outlined above, choosing "SPARE DRIVE" for the set type.

NOTE: The "SPARE DRIVE" set type can be selected only after a RAID 1 set is created.

6.3 Deleting RAID Sets and Spare Drive

1. To remove one or more RAID sets, select "Delete RAID Set."
2. Select the desired set and press Enter.
3. Press "Y" when asked, "Are You Sure?"
4. The drives will be returned to the selection of logical drives from which a new RAID set can be created.



The Delete RAID set option is also used to delete a spare drive for a RAID 1 set. To delete a spare drive, follow the procedure outlined above, select the desired spare drive and press Enter.

NOTE: If a spare drive was created for RAID 1 set, deleting the RAID 1 set will also delete the spare drive.

6.4 Rebuild RAID 1 Set

This menu selection is used to initiate the copying of data from an existing drive to a replacement drive that has been installed in a RAID 1 set after the failure of one of the members.

1. Select "Rebuild RAID1 set."
2. Select the desired set and press Enter.
3. Press "Y" when asked, "Are You Sure?"
4. The set will be rebuilt. The status of the rebuild is displayed in the MAIN MENU window.

```
RAID Configuration Utility - Silicon Image Inc. Copyright (C) 2003

MAIN MENU =
Create RAID set
Delete RAID set
Rebuild Raid1 set
Resolve Conflicts
Low Level Format
Logical Drive Info

Copying... / 05% done

HELP =
Press "Enter" to select
raid1 set to rebuild

PHYSICAL DRIVE =
0 IC35L020AVER07-0 19092MB
1 Maxtor 4R080L3 78167MB
2 ST330013AS 28629MB
3 Maxtor 4G120H6 117246MB

LOGICAL DRIVE =
SiI Raid1 Set 19091MB
Maxtor 4G120H6 117246MB

Invalid Raid drive

↑↓:Select Menu  ESC:Previous Menu  Enter:Select  Ctrl-E:Exit
```

6.5 Resolving Conflicts

When a RAID set is created, the metadata written to the disk includes drive connection information including the channel on the host adapter to which it is connected. If after a disk failure the replacement disk was previously part of a RAID set or used in another system, it may have conflicting metadata, specifically in reference to the drive connection information. If so, this will prohibit the RAID set from being either created or rebuilt. In order for the RAID set to function properly, this old metadata must be first overwritten with the new metadata. To correct this, select "Resolve Conflict" and the correct metadata, including the correct drive connection information, will automatically be written to the replacement disk.

1. Select "Resolve Conflicts" and press Enter.

```
RAID Configuration Utility - Silicon Image Inc. Copyright (C) 2003

MAIN MENU =
Create RAID set
Delete RAID set
Rebuild Raid1 se
Resolve Conflicts
Low Level Format
Logical Drive Info

HELP =
Help for resolving
conflicts

PHYSICAL DRIVE =
0 IC35L020AVER07-0 19092MB
1 Maxtor 4R080L3 78167MB
2 ST330013AS 28629MB
3 Maxtor 4G120H6 117246MB

LOGICAL DRIVE =
SiI Raid1 Set 19091MB
Maxtor 4G120H6 117246MB
Conflict

↑↓:Select Menu ESC:Previous Menu Enter:Select Ctrl-E:Exit
```

2. Select the "Conflict" entry in the Logical Drive Status window and press Enter.

```
RAID Configuration Utility - Silicon Image Inc. Copyright (C) 2003

MAIN MENU =
Create RAID set
Delete RAID set
Rebuild Raid1 se
Resolve Conflicts
Low Level Format
Logical Drive Info

HELP =
Press "Enter" to select
the set

PHYSICAL DRIVE =
0 IC35L020AVER07-0 19092MB
1 Maxtor 4R080L3 78167MB
2 ST330013AS 28629MB
3 Maxtor 4G120H6 117246MB

LOGICAL DRIVE =
SiI Raid1 Set 19091MB
Maxtor 4G120H6 117246MB
Conflict

↑↓:Select Menu ESC:Previous Menu Enter:Select Ctrl-E:Exit
```


- Note that some conflict resolutions may result in the drive letter assignment changing; for example the RAID set may have been drive D: but after the conflict resolution, it may become drive E:. Be aware of this when performing a conflict resolution. To maintain the same drive lettering, the SATA cables connected to the drives may need to be swapped, or in the case of a SATA-based removable drive unit, the order of the drives within the chassis made need to be changed. Press 'Y' to accept the change and resolve the conflict.

```

RAID Configuration Utility - Silicon Image Inc. Copyright (C) 2003

MAIN MENU =
Create RAID set
Delete RAID set
Rebuild Raid1 se
Resolve Conflicts
Low Level Format
Logical Drive Info

HELP =
Press "Enter" to select
the set

PHYSICAL DRIVE =
0 IC35L020AVER07-0 19092MB
1 Maxtor 4R080L3 78167MB
2 ST330013AS 28629MB
3 Maxtor 4G120H6 117246MB

LOGICAL DRIVE =
SiI Raid1 Set 19091MB
Maxtor 4G120H6 117246MB

Conflict

↑↓:Select Menu  ESC:Previous Menu  Enter:Select  Ctrl-E:Exit
  
```

- The conflict will be resolved. The RAID Set will appear in the Logical Drive window.

```

RAID Configuration Utility - Silicon Image Inc. Copyright (C) 2003

MAIN MENU =
Create RAID set
Delete RAID set
Rebuild Raid1 se
Resolve Conflicts
Low Level Format
Logical Drive Info

HELP =
Help for resolving
conflicts

PHYSICAL DRIVE =
0 IC35L020AVER07-0 19092MB
1 Maxtor 4R080L3 78167MB
2 ST330013AS 28629MB
3 Maxtor 4G120H6 117246MB

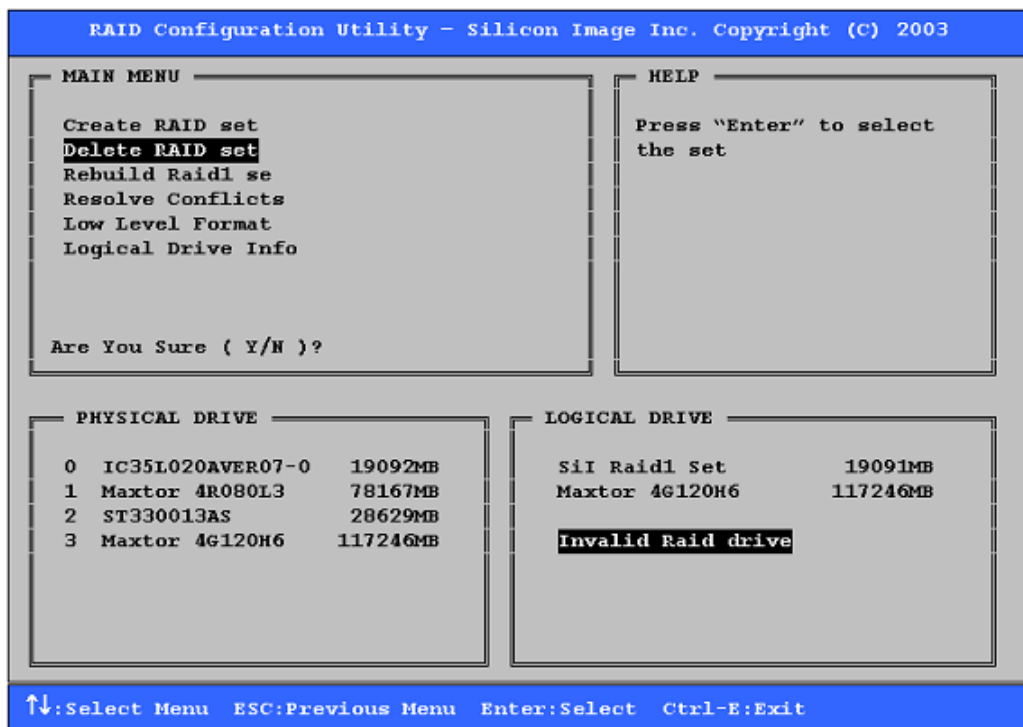
LOGICAL DRIVE =
ST330013AS 28629MB
SiI Raid1 Set 19091MB
Maxtor 4G120H6 117246MB

↑↓:Select Menu  ESC:Previous Menu  Enter:Select  Ctrl-E:Exit
  
```

6.6 Deleting Invalid RAID Drive

If a disk which was previously part of a RAID 1 or RAID 10 set is connected to the host adapter, it is not recognized as a valid drive for BIOS and SATARaid GUI. Before you can use this disk as a single drive, a spare drive for RAID 1 set, or create a new RAID set with it, you have to delete the invalid RAID drive first. Do the following procedure to delete the invalid RAID drive.

1. To delete invalid RAID drive, select "Delete RAID Set."
2. Select the desired invalid RAID drive and press Enter.
3. Press "Y" when asked, "Are You Sure?"
4. Metadata written to the disk will be erased and the drive will be returned to the selection of logical drives from which a new RAID set or spare drive can be created.



NOTE: There is no way to delete invalid RAID drive from SATARaid GUI.

6.7 Low Level Formatting

The Low Level Format menu selection allows the complete erasure of data on a hard drive. This is not an action which typically needs to be performed as formatting the drive under Windows is usually sufficient to prepare the drive for use.

6.8 Logical Drive Information

This menu item allows the display of the assignment of physical drives within a logical set (RAID set, RAID 1 spare, or unassigned). It is a display-only function. Use the up and down arrow keys to scroll between the drives in the Logical Drive Properties window. Press the ESC key when done viewing logical drive information.

RAID Configuration Utility - Silicon Image Inc. Copyright (C) 2003	
MAIN MENU Create RAID set Delete RAID set Rebuild Raid1 se Resolve Conflicts Low Level Format Logical Drive Info	HELP Press "Enter" and select logical drive to display information in detail
PHYSICAL DRIVE 0 IC35L020AVER07-0 19092MB 1 Maxtor 4R080L3 78167MB 2 ST330013AS 28629MB 3 Maxtor 4G120H6 117246MB	LOGICAL DRIVE SiI Raid10 Set
↑↓:Select Menu ESC:Previous Menu Enter:Select Ctrl-E:Exit	

RAID Configuration Utility - Silicon Image Inc. Copyright (C) 2003	
MAIN MENU Create RAID set Delete RAID set Rebuild Raid1 se Resolve Conflicts Low Level Format Logical Drive Info	HELP Press ↑↓ for logical drive information or press ESC to exit
PHYSICAL DRIVE 0 IC35L020AVER07-0 64K/CURRENT 1 Maxtor 4R080L3 64K/CURRENT 2 ST330013AS 64K/CURRENT 3 Maxtor 4G120H6 64K/CURRENT	LOGICAL DRIVE SiI Raid10 Set
↑↓:Select Menu ESC:Previous Menu Enter:Select Ctrl-E:Exit	

7 Allocating Partitions

After the Raid set(s) have been created, the BIOS reports the new set(s) as a new drive attached to the system. This drive must have a partition defined on it, then the drive must be formatted in preparation for use under Windows.

Windows XP, 2000, Server 2003, and NT use the Disk Management utility that is part of the Operating System. There are enough nuances that make it important to follow the procedure specific to the Operating System.

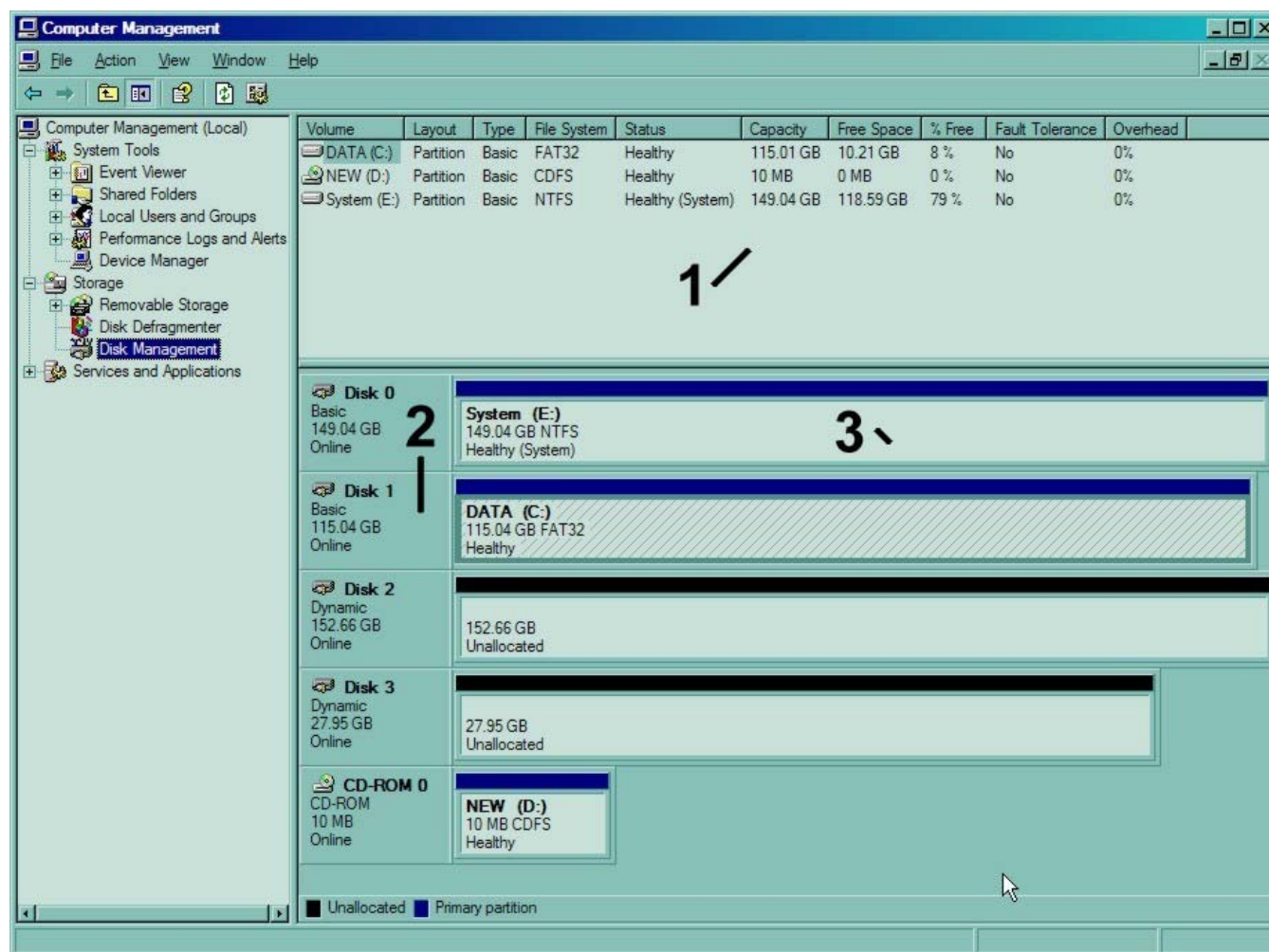
Windows 98 and Me use a significantly different procedure; defining the partitions is accomplished by booting the system to a DOS prompt and using the FDISK utility. Formatting and naming of the partitions is performed under Windows.

7.1 Windows Server 2003 & XP & 2000

Before creating any partitions, RAID sets must first be created using the BIOS RAID Utility or the SATARaid GUI. Once the sets have been created, allow the system to load Windows. Once Windows is running, open the Disk Management window located at:

Control Panel> Administrative Tools> Computer Management> Storage> Disk Management

A window similar to the following should appear:



This window has three main sections:

- 1) System listing of all formatted and available disks/RAID Sets.
- 2) Report of physical connection of disks/RAID Sets.
- 3) Report of partition status, disk letter, and volume name.

In the physical connection window, every disk should report as:

Basic

Disk Size (the actual available disk space will be reported here)

Online

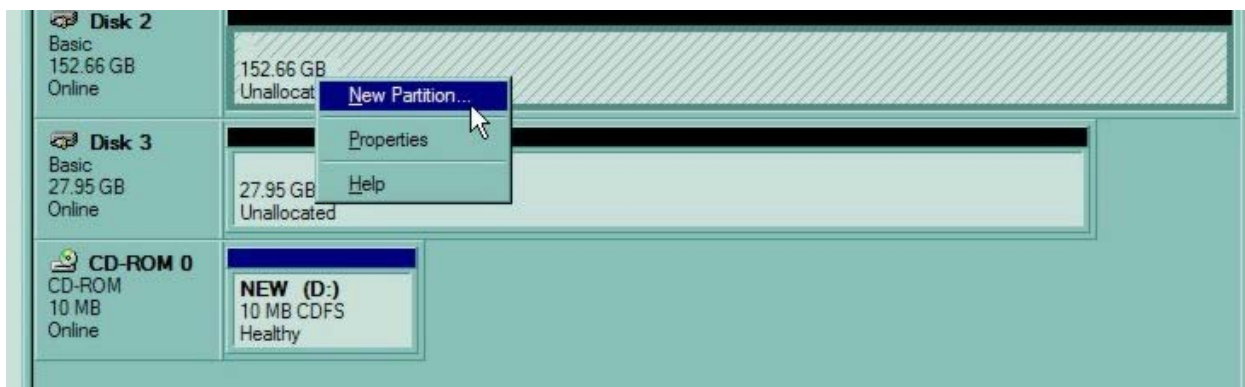
Instead of “Basic,” a disk may also report as either “Unknown” or “Dynamic.” If the disk reports as “Unknown” right-click on the disk icon and click “Write Signature.” A window will appear with the disk in question (all “Unknown” disks may appear in this window). Make sure the box next to each disk is checked, then click OK. The disk should now report as “Basic.”

If a disk reports as “Dynamic,” right-click on the icon of that disk, and click on “Convert to Basic Disk...” Within seconds the disk should report as Basic.

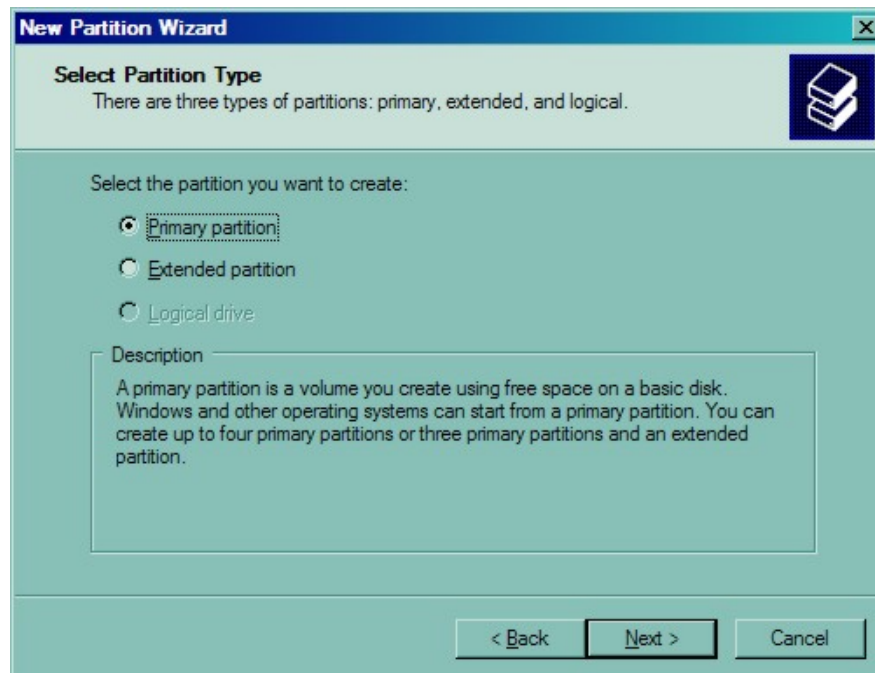
7.1.1 Creating the Partitions

In the Report of physical connection of disks/RAID Sets section, the order in which the drives are displayed corresponds directly to the order the Sets appear in the BIOS. Therefore, the first Unallocated Partition represents Set 1, and so on.

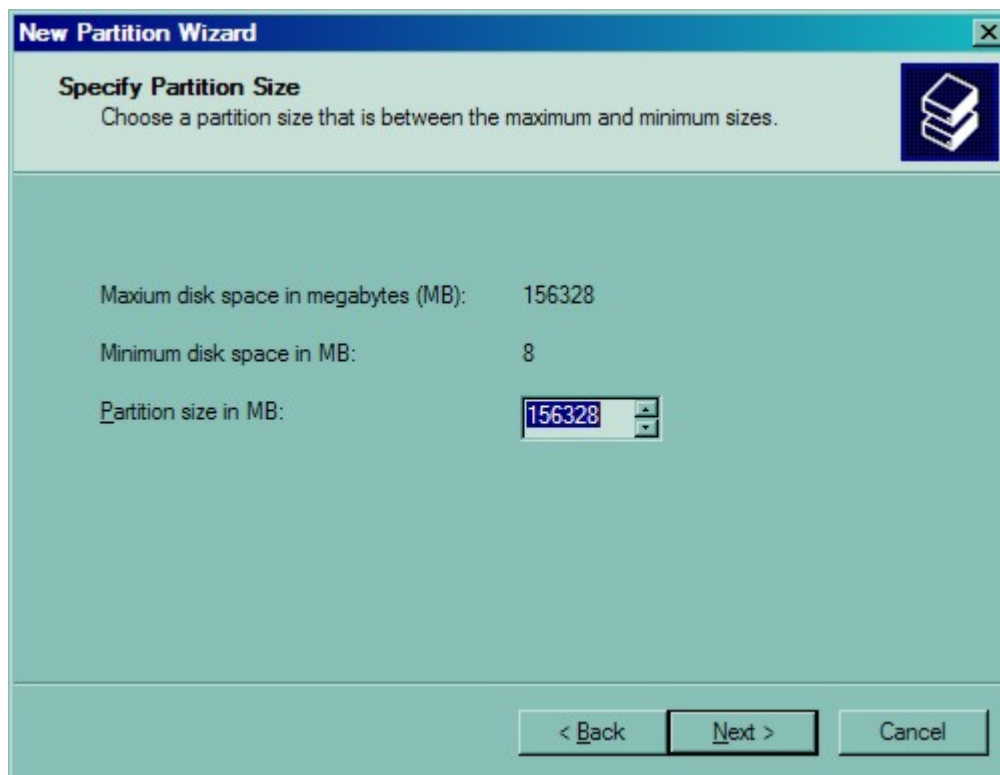
1. In this example, there are two disks with unallocated partitions. Right-click on the partition of the first disk and click on “New Partition.”



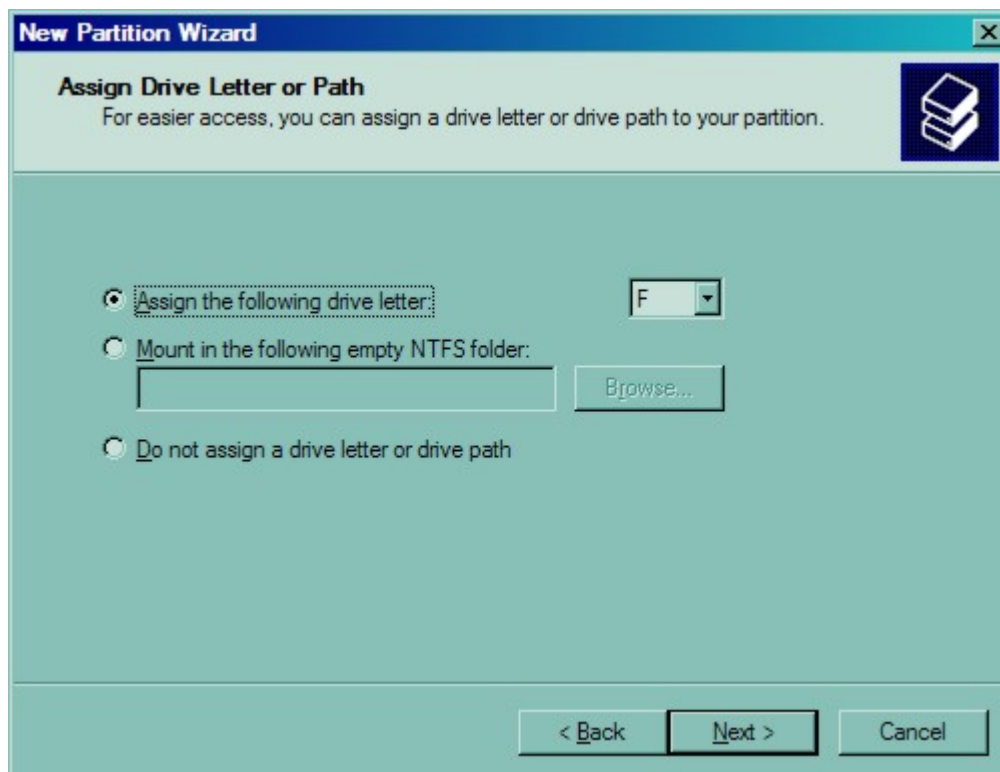
2. The “Create Partition Wizard” should appear. The first window is an introductory window to the Wizard. Click Next.
3. The second window designates the partition type. Choose primary partition and click Next.



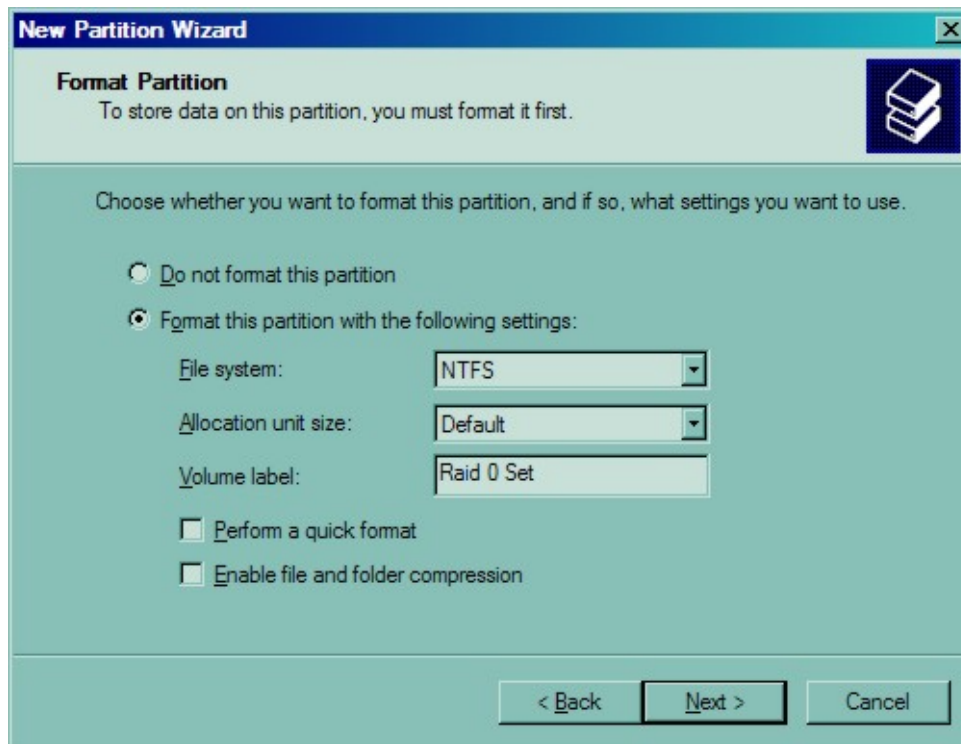
4. The third window designates the partition size. Since this is a Striped RAID set utilizing 2 disk drives, the size of the partition will be approximately twice the size of the smallest single disk drive. Click Next.



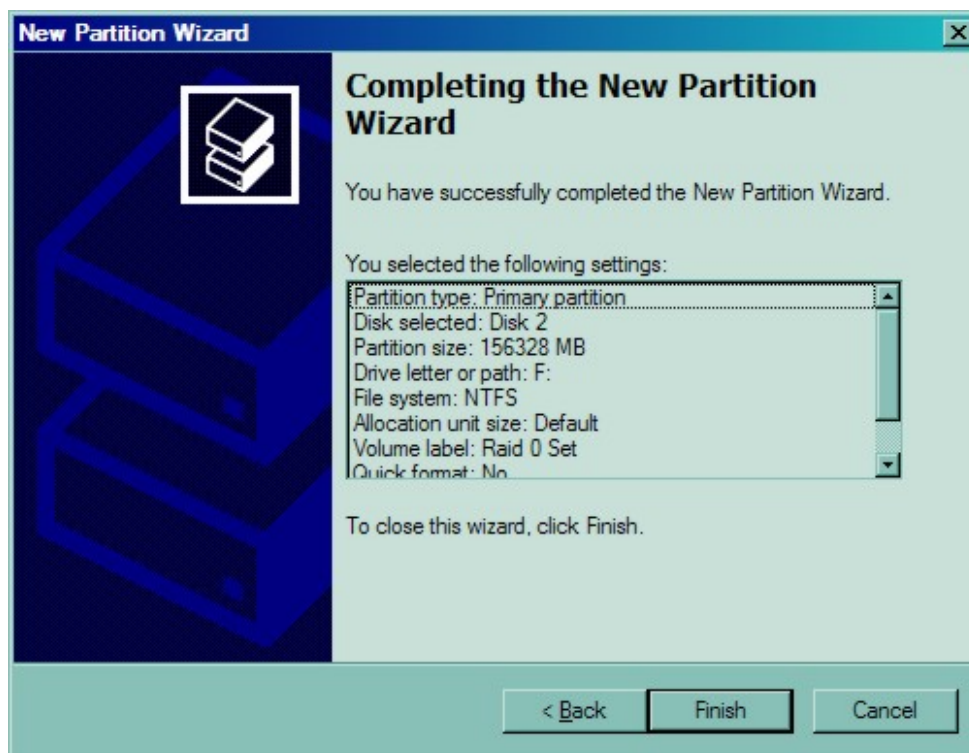
5. The fourth window designates the drive letter of the partition. Change the drive letter if desired. Click Next.



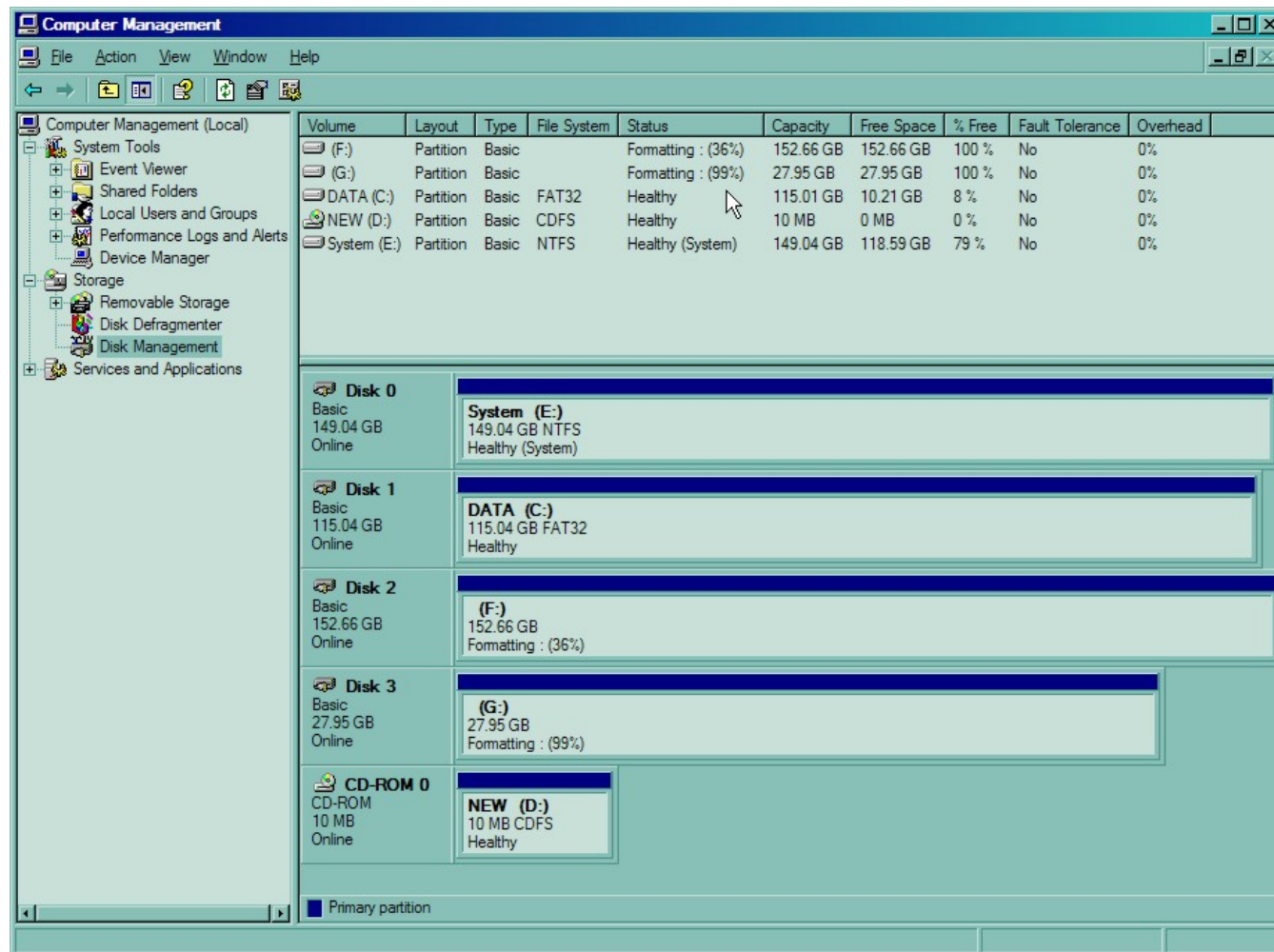
6. The next window allows the volume label to be set and selection of the type of formatting to take place upon the creation of the partition. Make sure the *Format this partition. . .* radio button is selected. Name the volume as desired (suggestions are generic names such as STRIPED SET or something specific to use such as FINANCIAL, CRITICAL, MISCELLANEOUS, etc.). It is recommended to use the default NTFS for the file system. Click Next.



7. The last window is a summary window listing all of the selections made. After verifying that everything is correct, click Finish.



The status of the newly created partition in the Disk Management window should change to Formatting and the percentage complete will be displayed. Depending upon the size of the partition, the format process may take several minutes. When complete, the status will change to “Healthy” and the name and drive letter will be updated. Once the disk reports Healthy, it appears in the listing in System Listing section with all of its pertinent information as well.



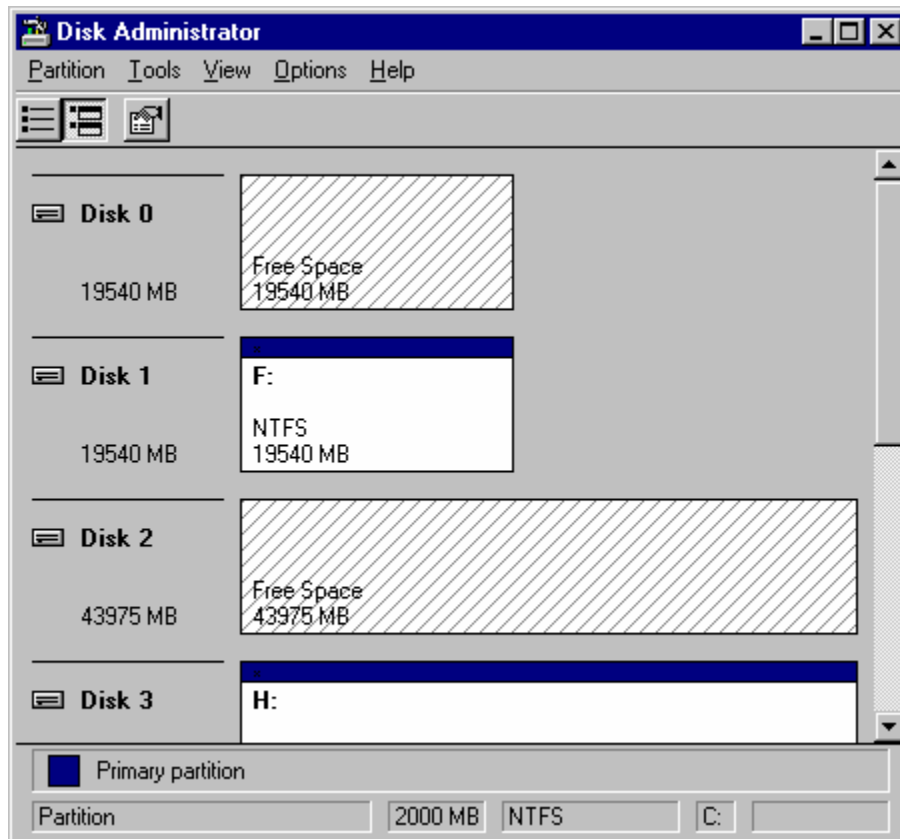
Repeat the above procedure as needed for any other partitions. Close the Data Management window by clicking on the small boxed “X” in the top right corner of the window. Click on the “My Computer” icon on the Desktop. The new drives will be visible and properly named. The new disks are available for use.

7.2 Windows NT

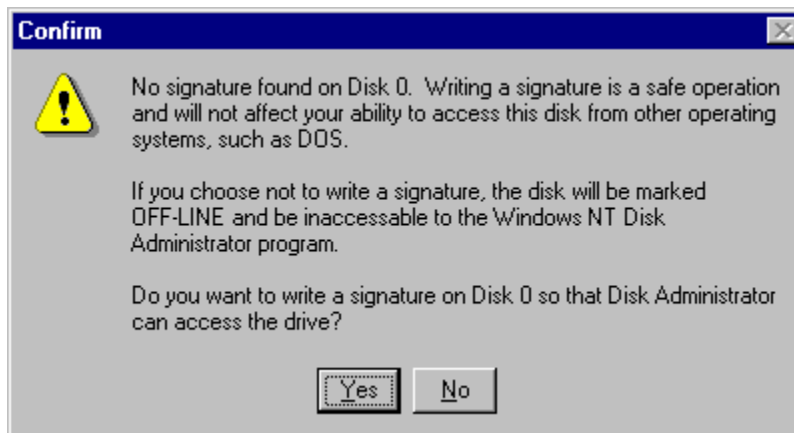
Before creating any partitions, RAID sets must first be created using the BIOS RAID Utility. Once the sets have been created, allow the system to load Windows. Once Windows is running, open the Disk Management window located at:

Control Panel> Administrative Tools> Computer Management> Storage> Disk Management

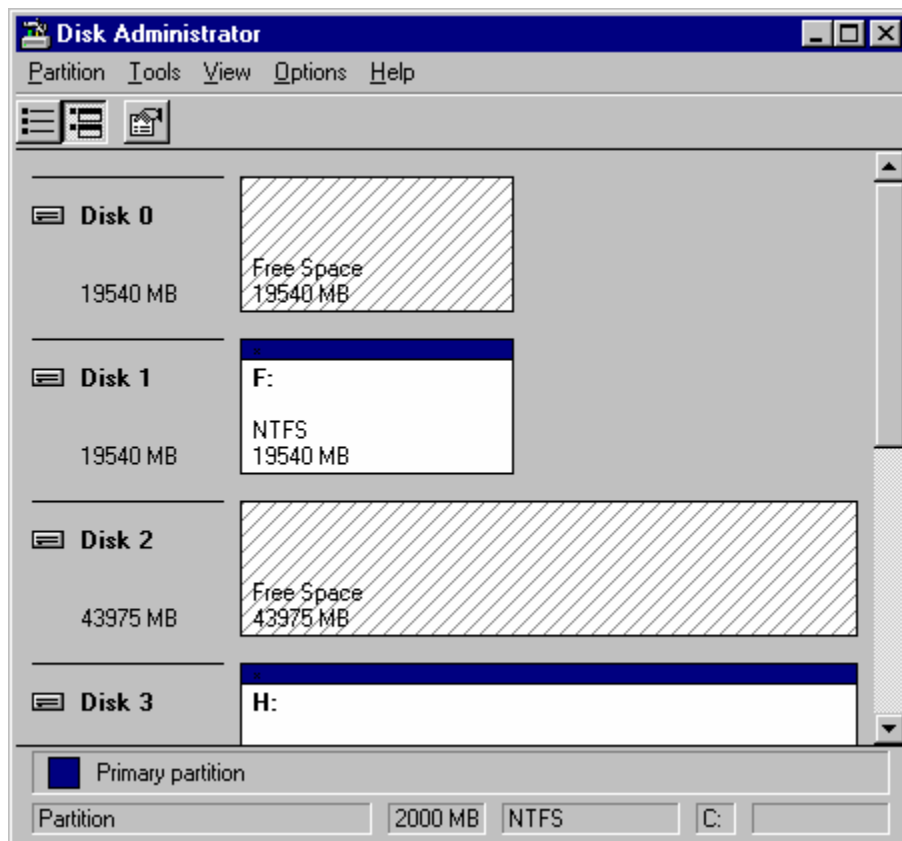
A window similar to the following should appear:



This Write Signature window may appear first: If so, answer YES for each disk reported with no signature found.



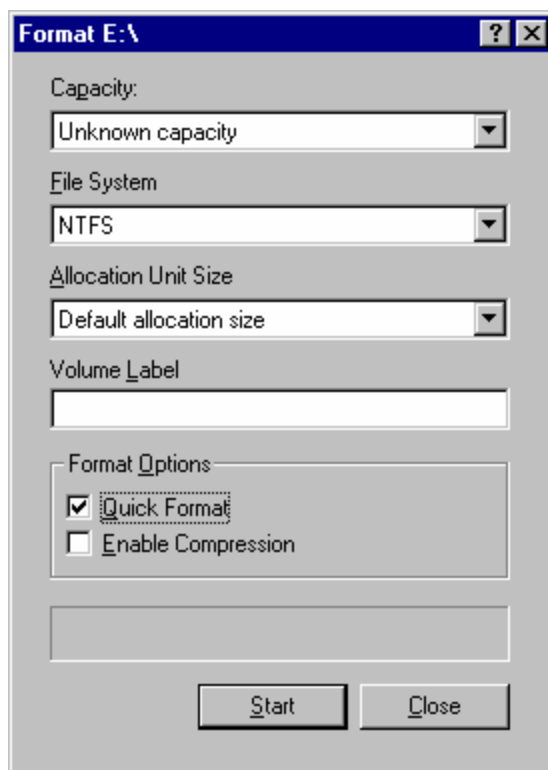
After any required disc signatures have been written, a window similar to the following will appear:



The first button on the toolbar opens the Disk Administrator Volumes window, which lists the recognizable Volumes, their capacity, free space, type of format, etc. The second button opens the Disk Configuration window (shown above), detailing all disks (or RAID Sets), partitions, and allows the user to format and name each partition and volume. Section 1 reports the size of each disk (or RAID Set). Section 2 reports each partition, and allows the user to format or delete partitions.

7.2.1 Creating the Partitions

1. If any disk in the RAID set appears to be formatted, right click on that partition (Section 2) and select Delete.
2. Once all disks are reporting as Free Space, right-click on each partition and select Create...
3. A Create Primary Partition window should now appear. Click OK.
4. Click Confirm.
5. Repeat this step for each disk.
6. Now, right-click on the first disk and select Mark Active.
7. A window will appear stating that this will take place on the next reboot. Click OK.
8. Repeat this step for each disk.
9. Close window. Confirm saving changes. Click Yes.
10. Disk Administrator will report that the disks were updated successfully. Click OK.
11. Re-open Disk Administrator.
12. Right-click on the first disk (this should now be the Striped Set).
13. Select Format... A window similar to the following window will appear:



14. Verify the settings as follows:
 - a. Capacity can not be changed.
 - b. Make sure that File System has NTFS selected.
 - c. Don't change the Default Allocation Size.
 - d. Select an appropriate name for Volume Label.
 - e. Select Quick Format.
15. Click on Start. The drive will be formatted.
16. Repeat this procedure for any remaining drives.
17. Close Disk Administrator and open My Computer (icon should be on Desktop).
18. The new disks should now appear in the My Computer window.
19. Close all windows and applications and Restart the computer.

7.3 Windows 98 & Me

Windows 98 and Me do not have a Disk Administrator or Disk Management utility. Instead, after creating RAID sets using the BIOS RAID utility and booting Windows, the partitions must be created using the FDISK program. To invoke FDISK from within Windows:

1. Click on the START button
2. Select Run...
3. Type *fdisk* in the Open.. box
4. Click OK

The following window will likely appear:

```
Your computer has a disk larger than 512 MB. This version of Windows
includes improved support for large disks, resulting in more efficient
use of disk space on large drives, and allowing disks over 2 GB to be
formatted as a single drive.

IMPORTANT: If you enable large disk support and create any new drives on this
disk, you will not be able to access the new drive(s) using other operating
systems, including some versions of Windows 95 and Windows NT, as well as
earlier versions of Windows and MS-DOS. In addition, disk utilities that
were not designed explicitly for the FAT32 file system will not be able
to work with this disk. If you need to access this disk with other operating
systems or older disk utilities, do not enable large drive support.

Do you wish to enable large disk support (Y/N).....? [Y]
```

Press Enter. The FDISK Options window will appear:

```
Microsoft Windows 98
Fixed Disk Setup Program
(C)Copyright Microsoft Corp. 1983 - 1998

FDISK Options

Current fixed disk drive: 1

Choose one of the following:

1. Create DOS partition or Logical DOS Drive
2. Set active partition
3. Delete partition or Logical DOS Drive
4. Display partition information
5. Change current fixed disk drive

Enter choice: [5]

Press ESC to exit FDISK
```

The Current Fixed Drive typically will be the System Drive (C:). In order to create partitions, the fixed drive needs to be changed. Select 5 and press Enter. A screen similar to the following will appear:

```
Change Current Fixed Disk Drive

Disk  Drv  Mbytes  Free  Usage
  1      C:   4095
      D:   33071
      E:    996
  2      57255  57255    %

(1 Mbytes = 1048576 bytes)
Enter Fixed Disk Drive Number (1-2).....[2]

Press Esc to return to FDISK Options
```

Enter the disk number to partition and press Enter. FDISK will return to the Options screen.

With the Current fixed drive set at the disk needing to be partitioned, Select 1 and press Enter to create the partition on the drive. The following window will appear:

```
Create DOS Partition or Logical DOS Drive

Current fixed disk drive: 2

Choose one of the following:

1. Create Primary DOS Partition
2. Create Extended DOS Partition
3. Create Logical DOS Drive(s) in the Extended DOS Partition

Enter choice: [1]

Press Esc to return to FDISK Options
```

Press Enter to select Create Primary DOS Partition. FDISK will scan the drive and the following window will appear. Press Enter to confirm use of the entire drive capacity for the partition.

```
                Create Primary DOS Partition

Current fixed disk drive: 2

Do you wish to use the maximum available size for a Primary DOS Partition
(Y/N).....? [Y]

Press Esc to return to FDISK Options
```

While the partition is being created, a progress indication appears at the bottom of the screen. Once the percentage counter reaches 100%, the following window will appear:

```
                Create Primary DOS Partition

Current fixed disk drive: 2

Do you wish to use the maximum available size for a Primary DOS Partition
(Y/N).....? [Y]

Primary DOS Partition created, drive letters changed or added

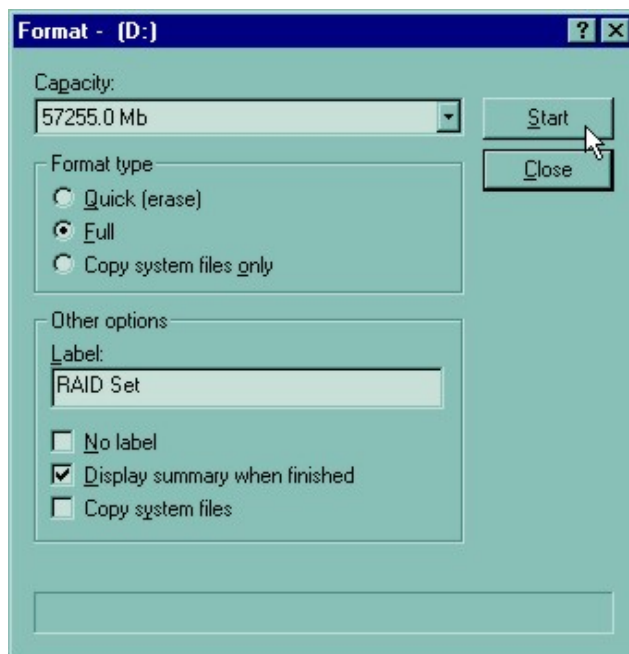
Press Esc to continue
```

Press the Esc key to return to the FDISK Options menu. Repeat the process for any remaining drives that need to be partitioned. When all drives have been partitioned, return to the FDISK Options menu, then press Esc to exit FDISK. The computer will need to be rebooted.

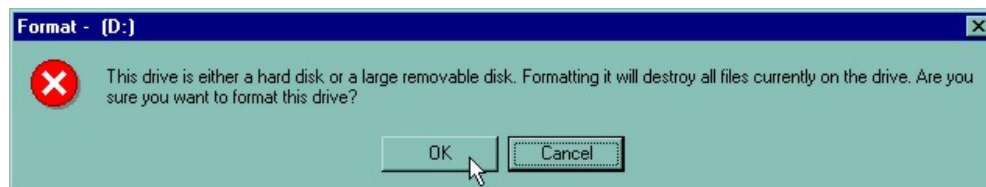
After restarting the computer and booting Windows double-click on the My Computer icon. Right-click on each new drive and select Format.



Select Full Format, enter the Label (name) for the drive or RAID set if desired and click OK.



The following window will likely appear. Click OK to proceed.



Repeat for each new drive. The new drives are now ready to be used.

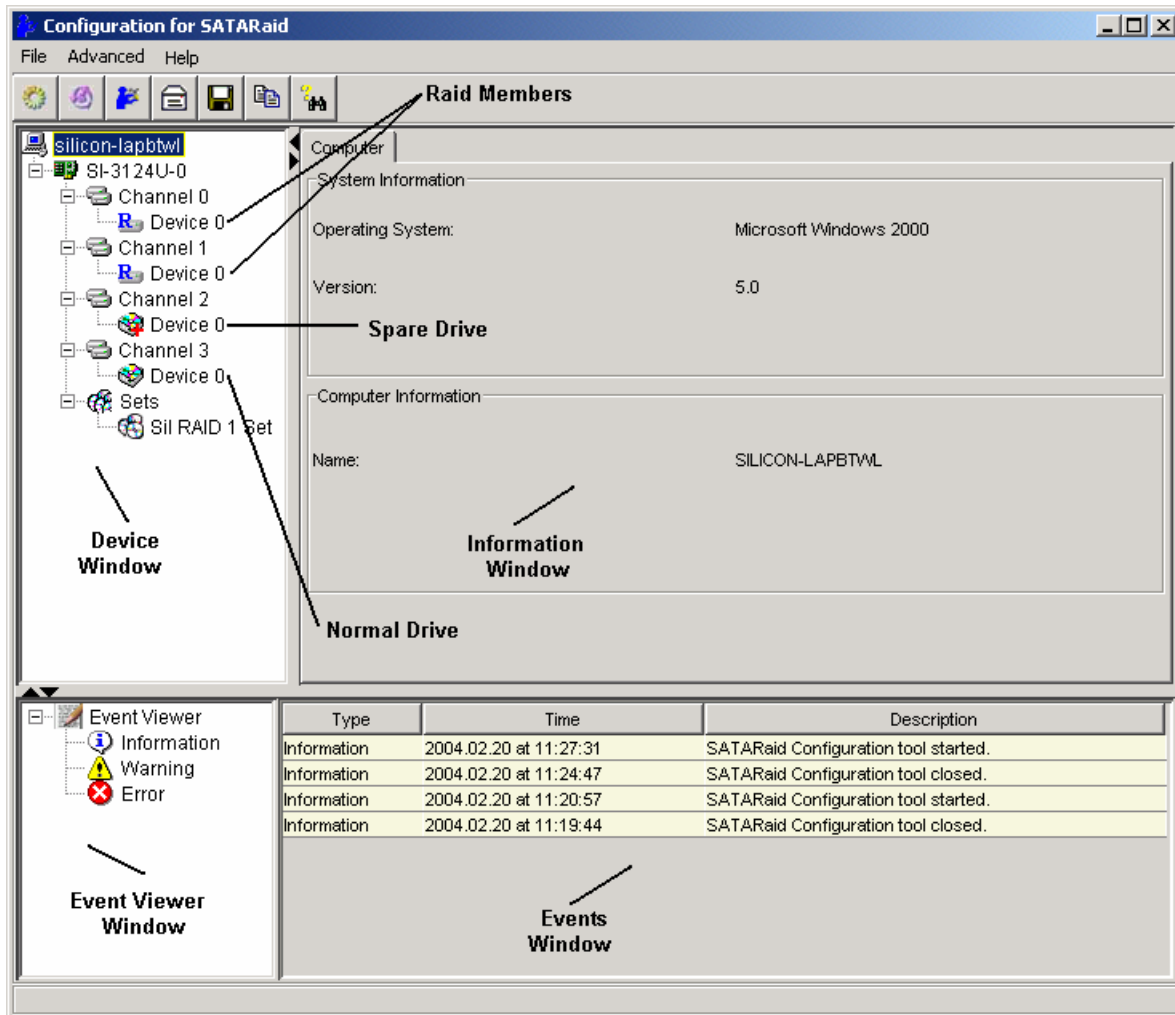
8 SATARaid GUI Overview

The SATARaid GUI Installation program configures the SATARaid GUI to automatically start when Windows is started. If the SATARaid GUI does not automatically start or is closed by the user, choose the JAVA SATARaid program from the Start Menu to launch the GUI.

The SATARaid GUI monitors the system's RAID Set in the background. It runs minimized in the System Tray. To open the main window, click the icon located on the taskbar. The icon is in blue color if all RAID sets are healthy. The icon is in red color if there is any critical or broken RAID set.



The main window will display:

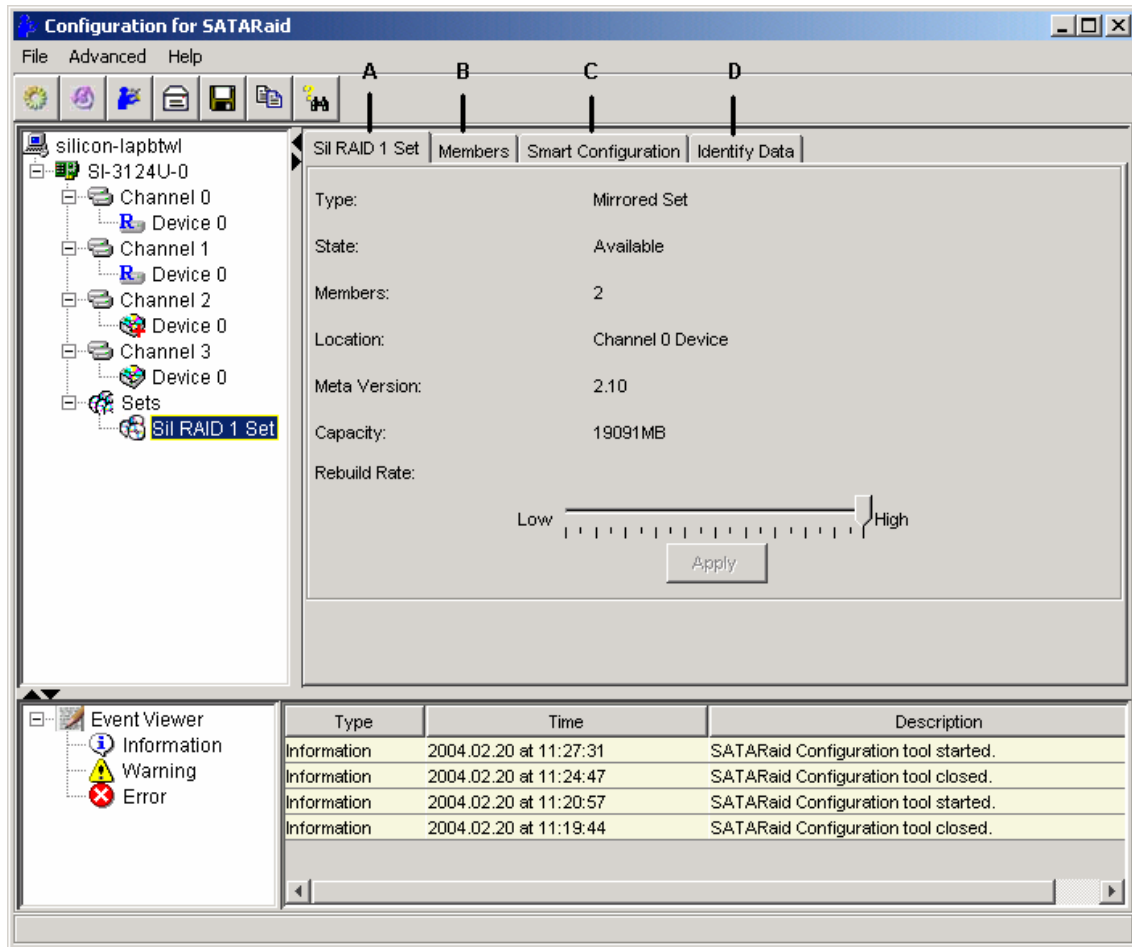


8.1 Devices and Information Windows

The Devices window identifies the computer running SATARaid, SATA host adapters, SATA devices, and configured RAID sets. Selecting each component in the configuration tree displays in the Information window data that is unique to that component. Selecting a specific device channel will show that channel's information. Selecting a specific drive reports all pertinent information for that drive, including the drive's serial number, firmware version, ATA version and current mode as well as Configuration and Disk Identification information. Selecting Sets lists the Sets in the configuration tree and provides information on RIO Version.

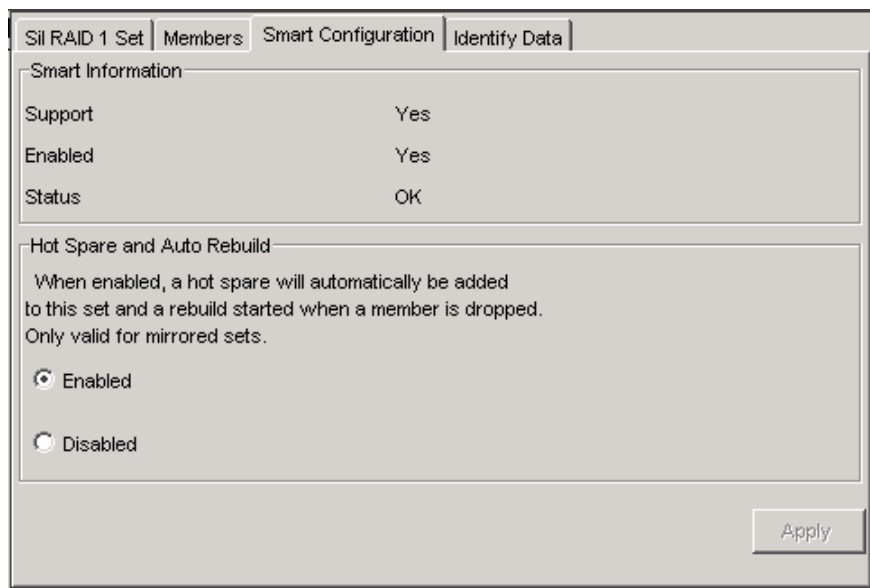
Right clicking on a device component which is not belong to any RAID set and is not a spare drive, a popup menu will be displayed to let user enables/disables the device depending on the device's current state. This function is useful for safely remove a device from the system and prevent possible data loss.

Selecting a specific RAID set, such as Set 0, and the type of RAID set, the number of members and capacity is reported (A).



The Members tab of this window (B) reports the device identification (corresponding with the information in the BIOS) and the state of each device. The State of the “destination” drive that is being rebuilt may report as Rebuild for a long period of time depending on the size of the disk.

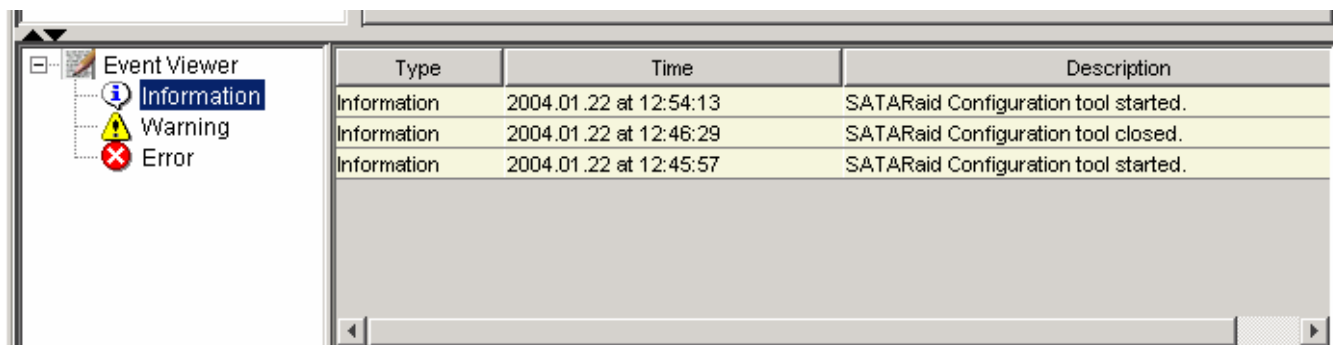
SMART and Configuration information is displayed by selecting the Smart Configuration tab (C). Also in this section is a selection for automatically adding a hot spare and initiating a rebuild in the event of a fault on a RAID 1 set. Note that the spare drive must have previously been allocated in the RAID BIOS configuration screen.



Data Identification can be displayed by selecting the Identify Data tab (D).

8.2 Event Viewer and Events Windows

The Event Viewer and Events Windows display SATA device-related events that occur while SATARaid is running. Selecting categories in the Event Viewer window applies a filter to the Events window so that only messages of the type selected are displayed. This allows only Warning or Error messages to be seen, for example.



8.3 SATARaid Toolbar and Menu Commands

The Toolbar buttons from Left to Right are:

- A – RAID Management
- B – System View
- C – Configure SATARaid
- D – Send Configuration
- E – Save Configuration
- F – Copy Configuration
- G – SATARaid Help



All options available via the Command Menu are replicated on the toolbar except Exit and About SATARaid. The Menu commands are shown below

<u>F</u> ile	<u>A</u> dvanced	<u>H</u> elp
<u>S</u> ave Configuration	RAID <u>M</u> anagement	SATARaid <u>H</u> elp
<u>C</u> opy Configuration	System <u>V</u> iew	<u>A</u> bout SATARaid
<u>E</u> xit	Configure SATARaid	
	Send <u>C</u> onfiguration	

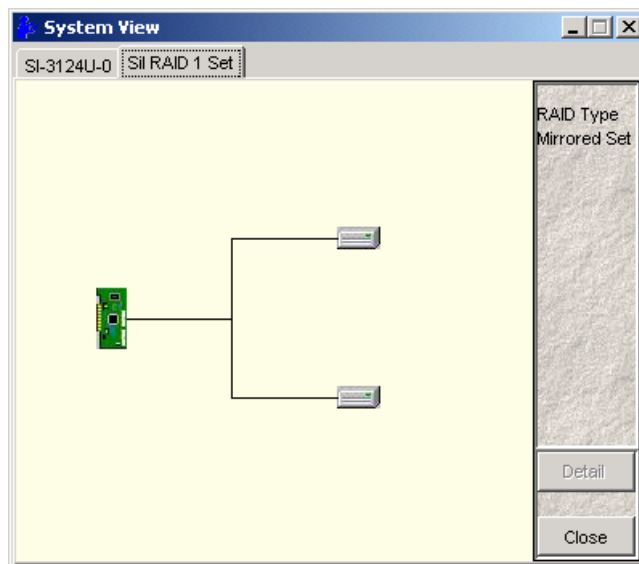
The commands are documented on the pages that follow.

8.3.1 RAID Management

This command allows the management of the RAID sets and drives on the SATA host adapter. It is available only under Windows 2000, XP, and Server 2003. See Section 10 - *RAID Set Management Under Windows 2000/XP/Server 2003* for detailed instructions on using this feature.

8.3.2 System View

This command displays a graphical representation of the host adapter and RAID sets. Clicking on each of the components and then clicking the Details button will open a new window showing more information on the selected device.



8.3.3 Configure SATARaid

This command allows the configuration of the SATARaid program to be viewed and changed. SATARaid configuration is documented in detail in the next section of this manual.

8.3.4 Send Configuration

This command allows the SATARaid configuration file to be emailed to the address selected during configuration. This function is used most frequently when contacting the system administrator for technical support.

8.3.5 Save Configuration

This command allows the SATARaid configuration to be saved.

8.3.6 Copy Configuration

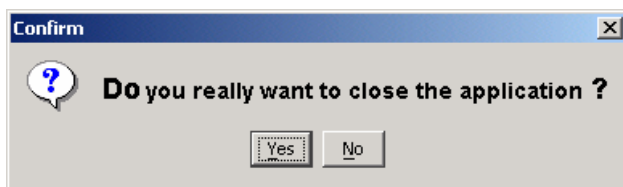
This command allows the creation of a copy of the SATARaid configuration file.

8.3.7 SATARaid Help

This command opens an interactive help dialog using the standard Windows help interface.

8.3.8 Exit

This command is displayed only on the command menu. Choosing this command exits the SATARaid program.



8.3.9 About SATARaid

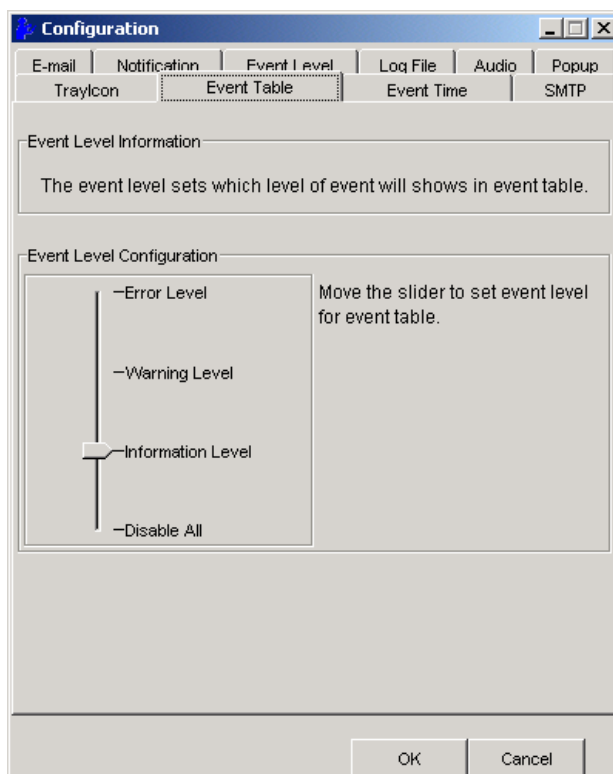
This command is displayed only on the command menu. Choosing this command displays a dialog box with more information about the SATARaid program, including the revision level.

9 SATARaid Configuration

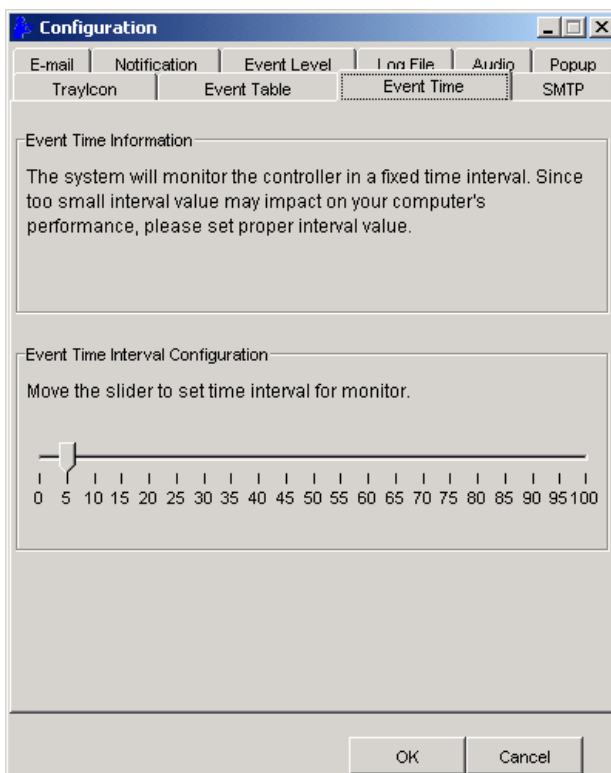
SATARaid configuration options include customization of the settings for Event Notification, E-mail Notification, Log File, Audio, and Popup. The first tab displayed when SATARaid configuration is opened is for Event Table configuration. This setting determines which events are displayed in the Event Table.

The messages logged for the various settings are as follows:

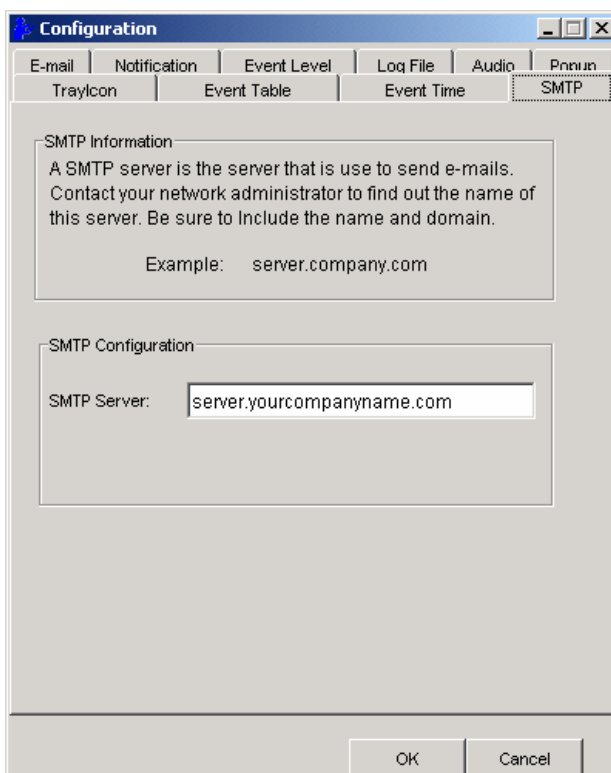
- Error Level - The following messages are logged:
 - Errors
- Warning Level - The following messages are logged:
 - Warnings
 - Errors
- Information Level - The following messages are logged:
 - Informational
 - Warnings
 - Errors
- Disable All - No events will be logged.



The next tab is used to set the interval time in seconds for the program to poll the status of the host adapter and devices. Lower settings may have an impact on system performance. If the RAID sets are subject to heavy activity, the Event Time interval should be increased.



The SMTP tab allows the server name to be set for all SATAraid email-related functions. These include sending of configuration files and automatic notification. This entry must include the full name and of server and the top-level domain, for example mail.mycompany.com or smtp.mymailserver.com. Contact the System Administrator if the name of the SMTP server is not known.



The current SATARaid configuration may be sent via e-mail. This feature is most often used when contacting the system administrator for technical support. Select the e-mail tab in the SATARaid Configuration Menu and enter the default e-mail address and subject line for the party receiving the configuration data. The default address and subject can be overridden prior sending the email.

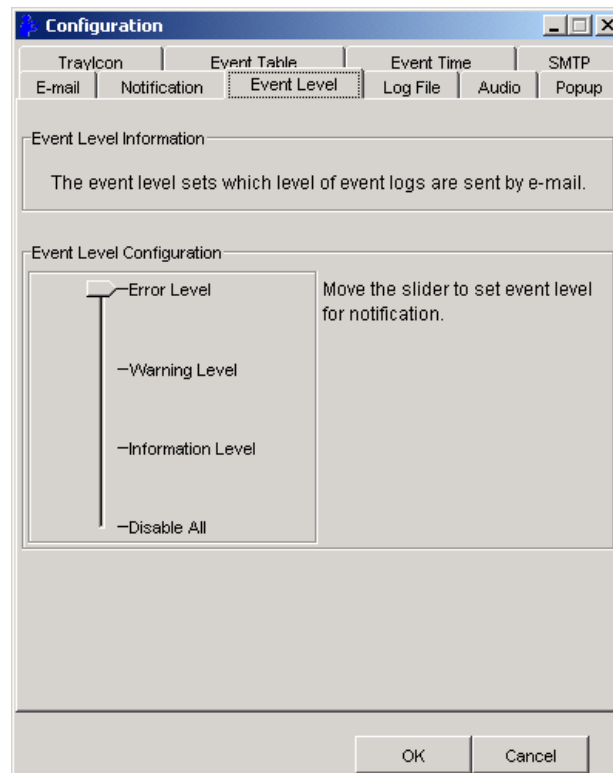
The screenshot shows the 'Configuration' window with the 'E-mail' tab selected. The window has a title bar with a blue icon and standard window controls. Below the title bar is a tabbed interface with tabs: 'TrayIcon', 'Event Table', 'Event Time', 'SMTP', 'E-mail' (selected), 'Notification', 'Event Level', 'Log File', 'Audio', and 'Popup'. The 'E-mail' tab contains two sections: 'E-mail Information' with a text box containing 'E-mail Subject can be overridden at the point when the configuration is sent.', and 'E-mail Configuration' with two text boxes: 'E-mail Address:' containing 'Administrator@yourcompanyname.com' and 'E-mail Subject:' containing 'SATARaid Report'. At the bottom are 'OK' and 'Cancel' buttons.

When different types of events occur, SATARaid can send notices to assigned individual e-mail addresses. Select the Notification tab and enter the e-mail addresses of all parties to whom the notices will be sent.

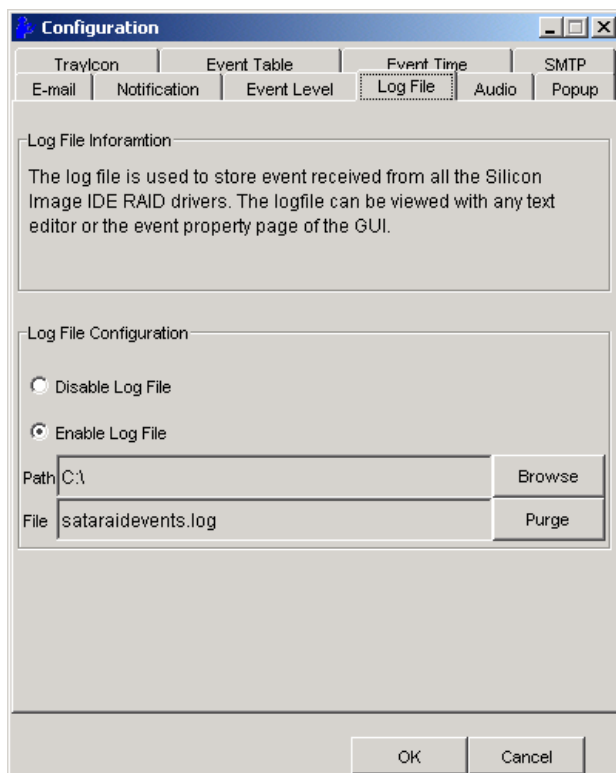
The screenshot shows the 'Configuration' window with the 'Notification' tab selected. The window has the same title bar and tabbed interface as the previous screenshot. The 'Notification' tab contains three sections: 'E-mail Notification Information' with a text box containing 'E-mail notification is used to send an e-mail to each address in the list for each event received from the driver or for sending system configuration.', 'Subject:' with a text box containing 'SATARaid Event Report', and 'Address List:' with a large empty text box for entering addresses. To the right of the 'Address List' box are 'Add' and 'Remove' buttons. At the bottom are 'OK' and 'Cancel' buttons.

The Event Levels tab is used to select which events trigger a message to be sent to those in the Notification email list. (see Notification on previous page)

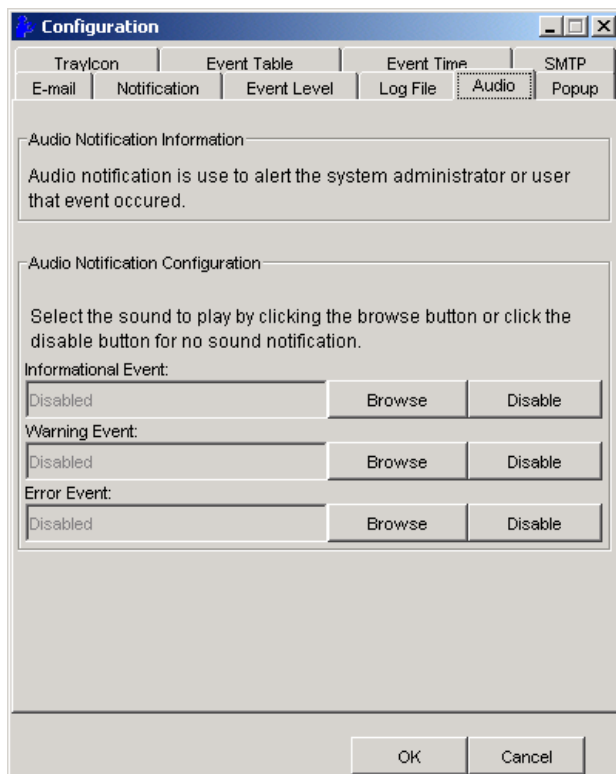
- Error Level - The following events will be sent:
 - Errors
- Warning Level- The following events will be sent:
 - Warnings
 - Errors
- Information Level - The following events will be sent:
 - Informational
 - Warnings
 - Errors
- Disable All - No event logs will be sent.



The log file is used to store event information received from all Silicon Image RAID drivers. The log file is a text file and can be viewed with any text viewer (such as Notepad) or with the Event Property page of SATARaid. Use the Log File tab to set location and the desired filename for the log file.

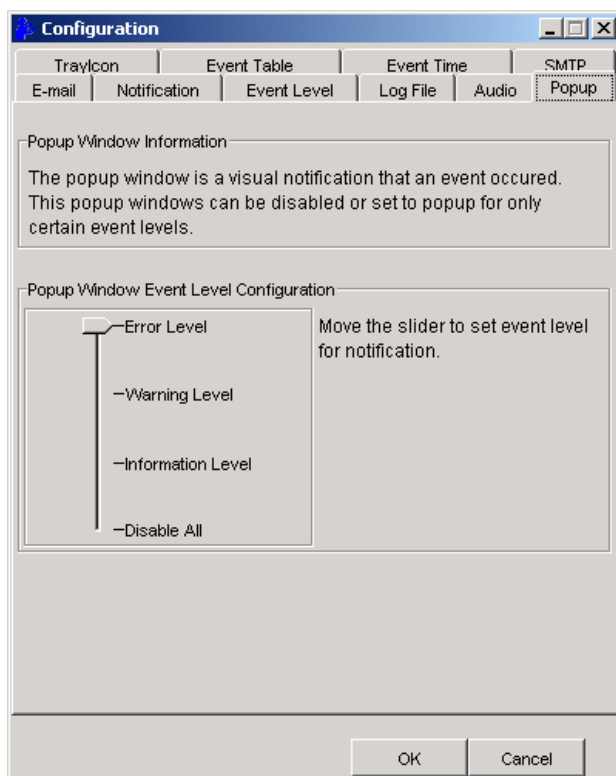


The Audio tab is used to select audio alerts in response to events. Each event can use a different audio alert, and each can be individually disabled.



SATAraid can be configured to notify the user of events using messages in popup windows. These alerts can occur separately or in conjunction with audio alerts and email notification. Use the slider control to set the event level for popups to occur:

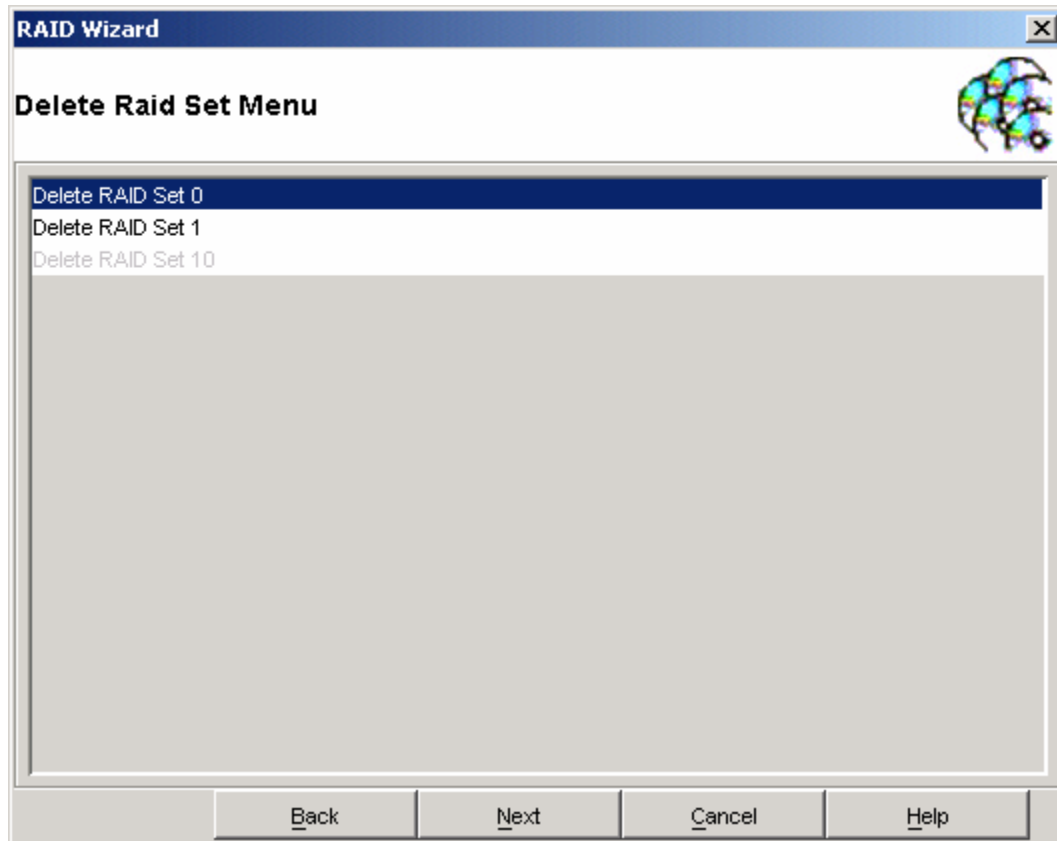
- Error Level - The following events will trigger a popup window:
 - Errors
- Warning Level- The following events will trigger a popup window:
 - Warnings
 - Errors
- Information Level - The following events will trigger a popup window:
 - Informational
 - Warnings
 - Errors
- Disable All - No events will trigger a popup window.



10 RAID Set Management Under Windows 2000/XP/Server 2003

Selecting the RAID Management command or toolbar button causes a RAID Configuration Wizard to open. Click Next to go the Main Operation Menu screen.

NOTE: Modifying RAID Sets may result in the existing data on the affected drives being permanently lost. Make sure all data is backed up prior to executing any operation described in this section.



Menu selections that are available depend on the number of drives available and whether any RAID sets currently exist. The commands available from within the Wizard are:

Create RAID Set is used to create a new RAID 0, 1, or 10 Set.

Delete RAID Set is used to delete a RAID Set or to deallocate a spare RAID 1 drive.

Modify RAID Set allows certain parameters of the RAID Set, such as rebuild rate for RAID 1, to be modified.

Create Spare Drive For RAID 1 is used for allocating a spare drive to a RAID 1 set.

Delete Spare Drive removes the allocated spare drive from a RAID 1 set.

These operations are detailed in the pages that follow.

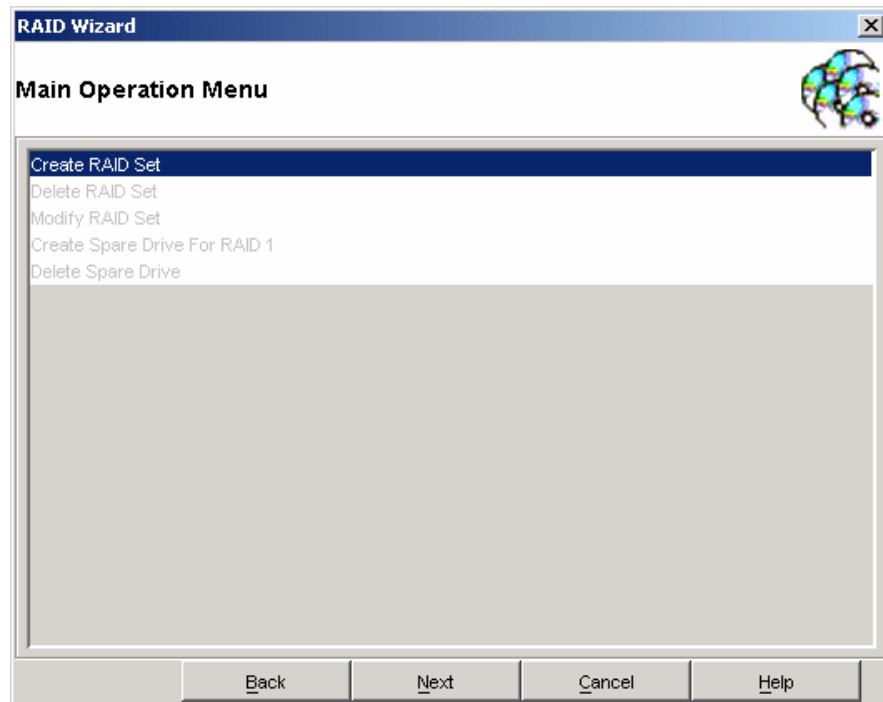
10.1 Creating RAID Sets

As previously discussed, the Silicon Image SATA host adapter supports RAID 0, 1, and 10 configurations. The selection of the RAID level to be used should be based upon factors including performance, data security, and number of drives available. It is best to carefully consider the long-term role of the system and plan the data storage strategy appropriately.

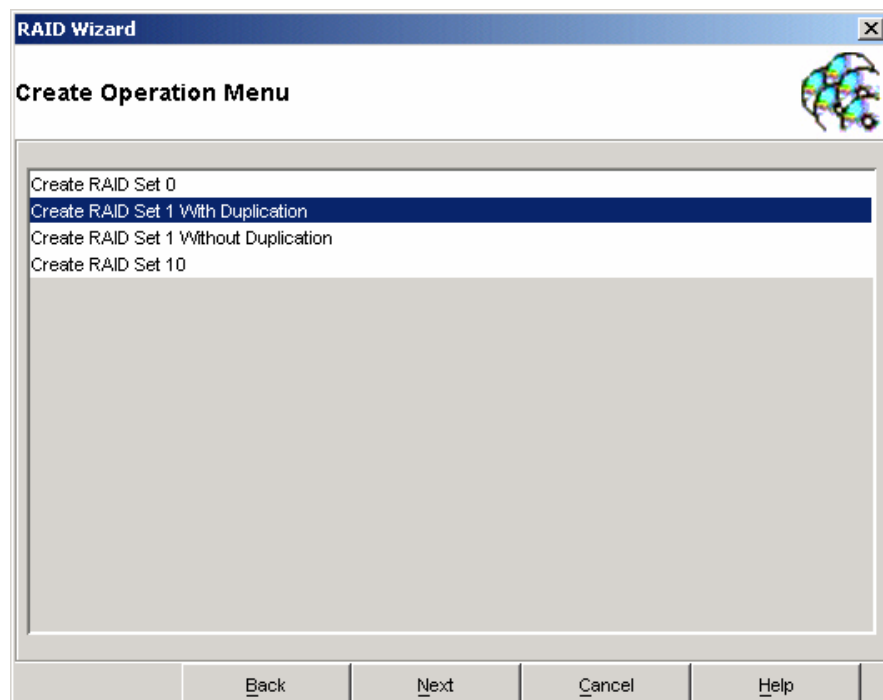
10.1.1 Creating a RAID 1 Set

The following example shows the creation of a RAID 1 Set with Duplication.

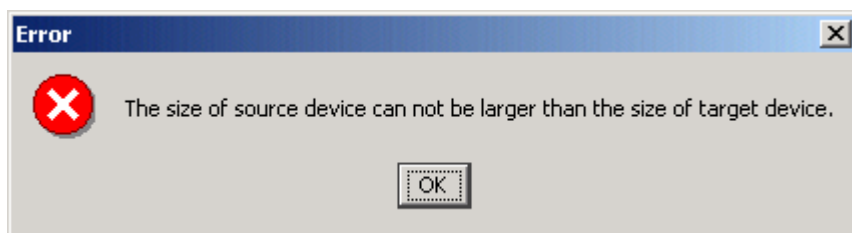
1. Start the RAID Wizard. Select "Create RAID Set" and click Next.



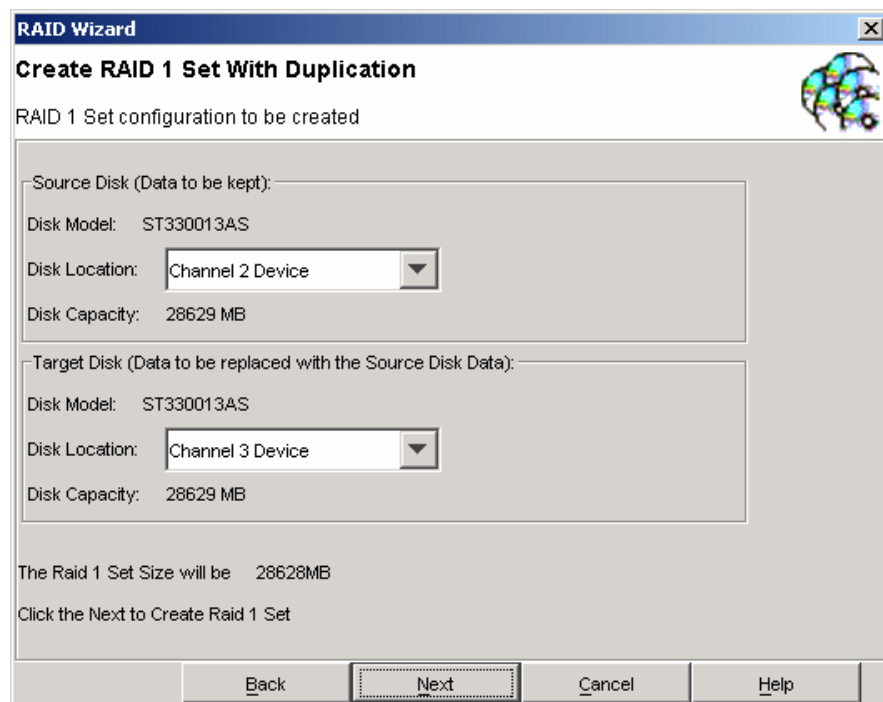
2. Choose the type of RAID set to be created and click Next.



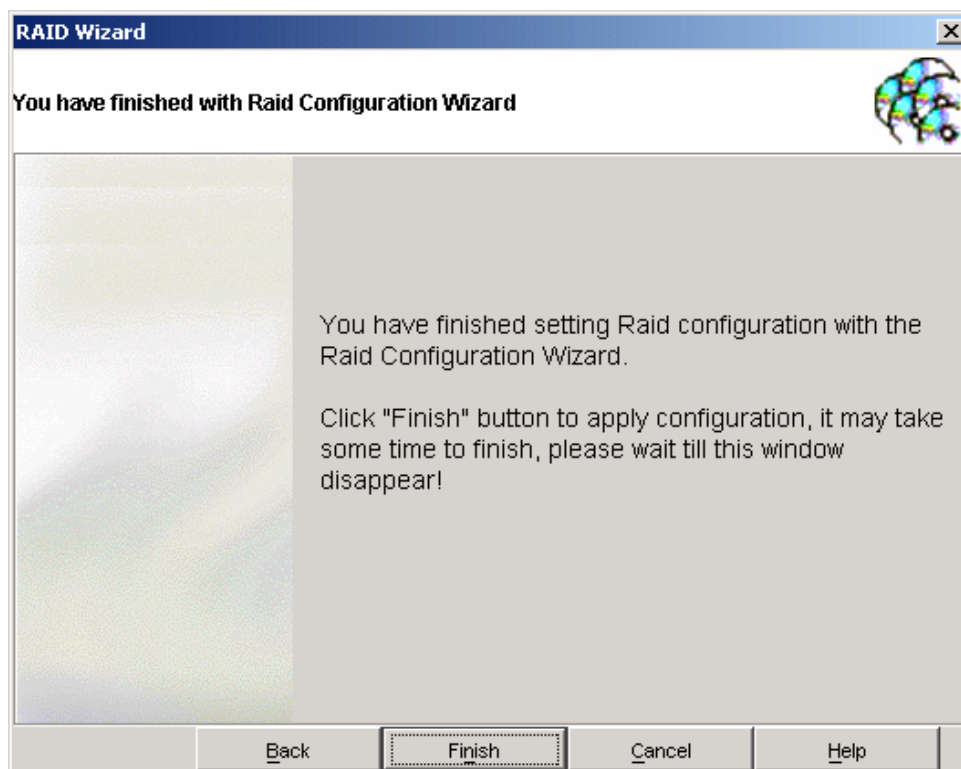
3. The following message may be displayed. Click OK to acknowledge.



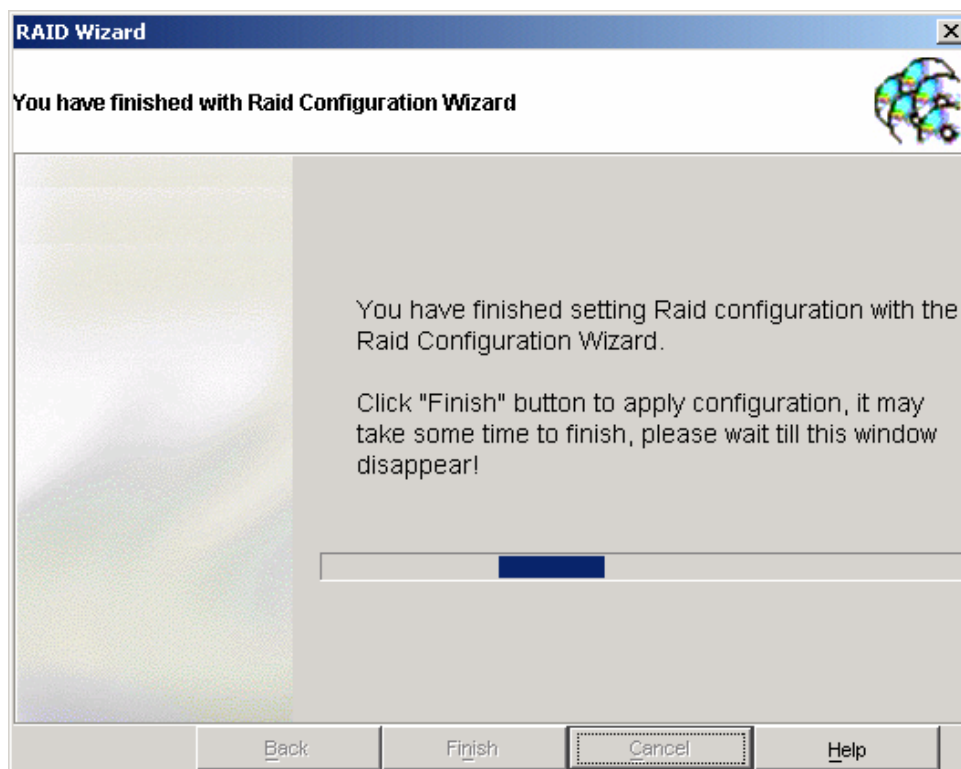
4. Select the Source and Target disks for the Set and click Next.



5. A window will be displayed noting configuration success. Click Finish.

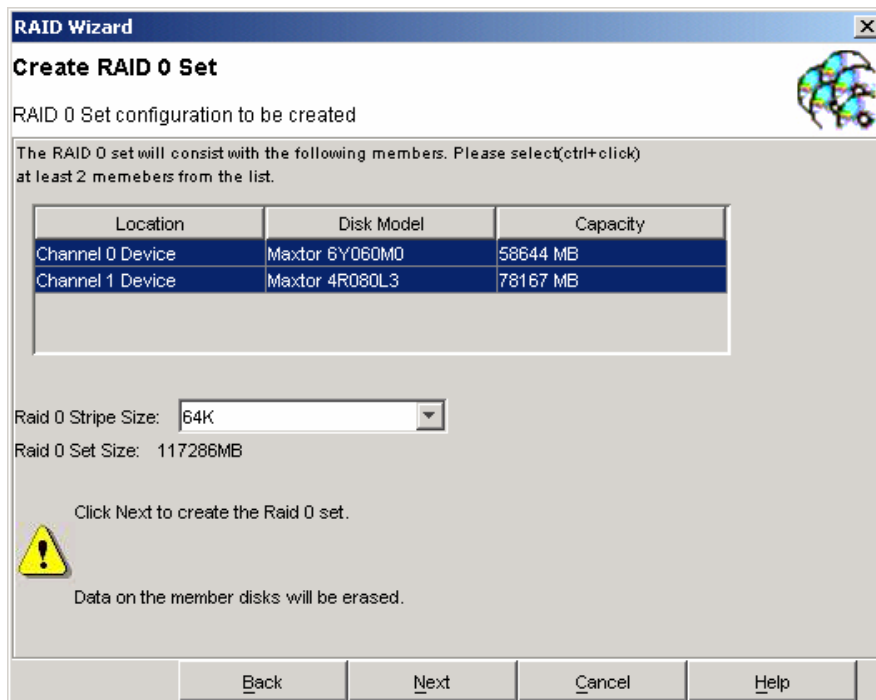


6. An acknowledgement window will appear. Click Finish. A moving bar will appear in the window while the operation is in progress. Once the window closes, the operation is complete. When the window closes, the new RAID Set will appear in the SATAraid window under RAID Sets. After allocating any other RAID sets, you will need to create and format the new partitions. See Section 7 - *Allocating Partitions* for instructions.

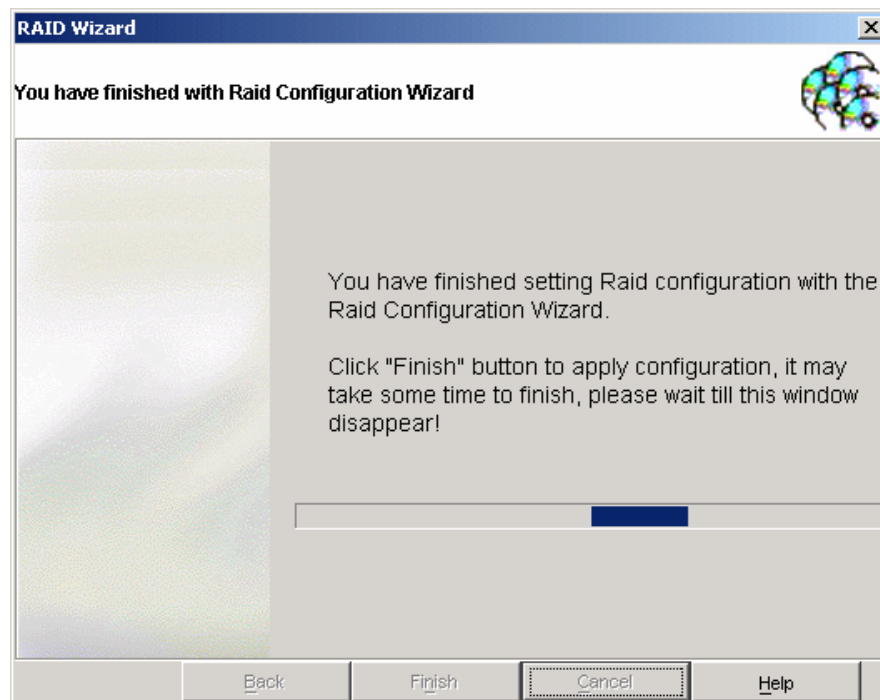


10.1.2 Creating a RAID 0 Set

1. Referring to the example above for creating a RAID 1 Set, start the RAID Wizard. Select "Create RAID Set" and click Next. Select 'Create RAID 0 Set' and click Next.
2. Hold down the Ctrl key on the keyboard while clicking devices to add them to the RAID Set. A RAID 0 set must contain at least two members. Add as many members as desired. Click Next.

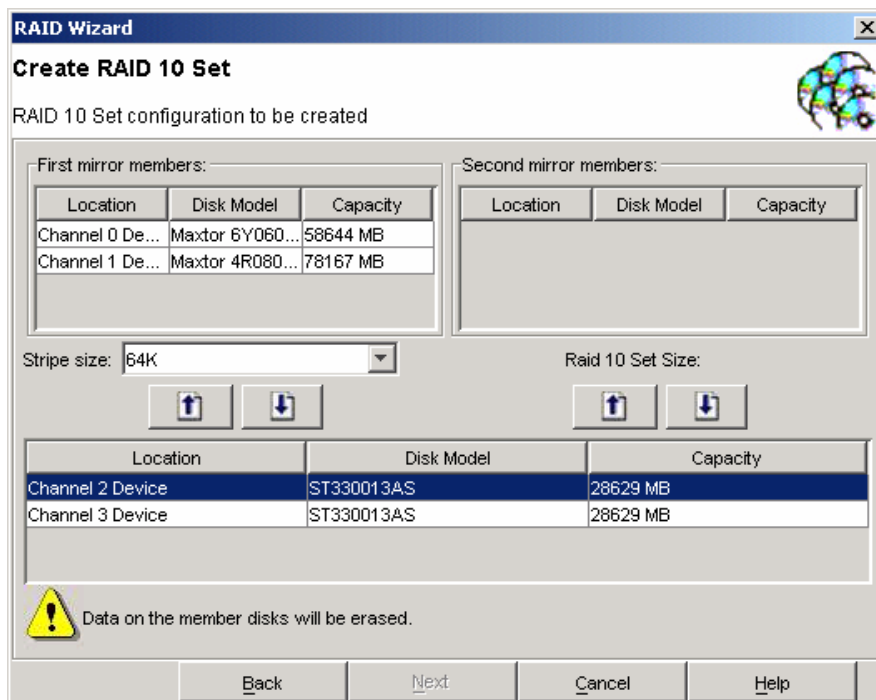


3. An acknowledgement window will appear. Click Finish. A moving bar will appear in the window while the operation is in progress. Once the window closes, the operation is complete. When the window closes, the new RAID Set will appear in the SATARaid window under RAID Sets. After allocating any other RAID sets, you will need to create and format the new partitions. See Section 7 - *Allocating Partitions* for instructions.

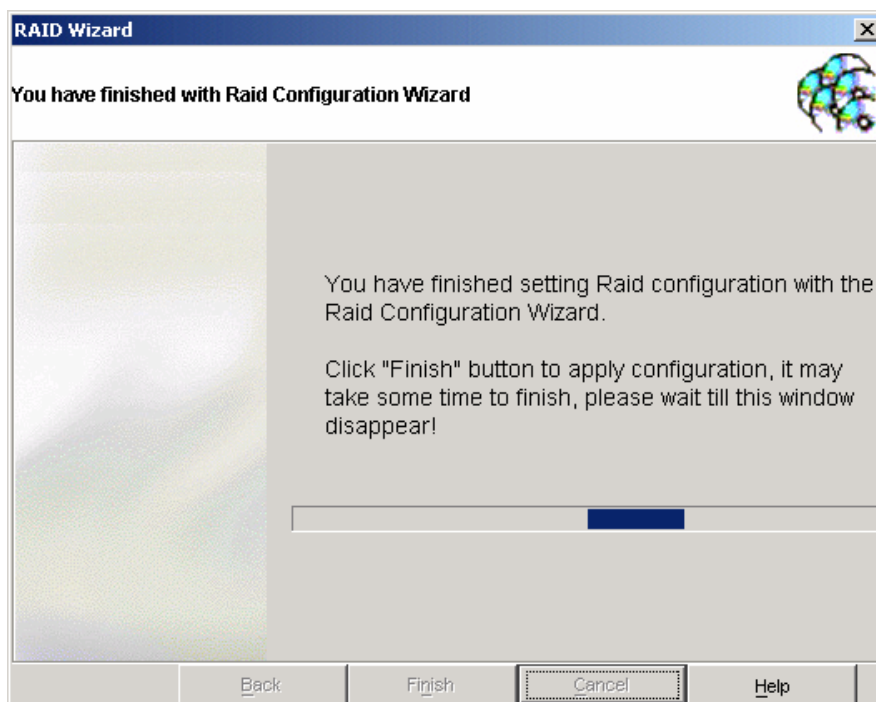


10.1.3 Creating a RAID 10 Set

1. Referring to the example above for creating a RAID 1 Set, start the RAID Wizard. Select "Create RAID Set" and click Next. Select 'Create RAID 10 Set' and click Next.
2. Highlight the device to add in the lower section of the Create RAID 10 Set window. Click the up arrow under the First mirror members section to add the first device to the RAID Set. Repeat for the second device. Click the up arrow under the Second mirror members section to add the third device to the RAID Set. Repeat for the fourth device. A RAID 10 set must contain at least four members. When done adding members, click Next.



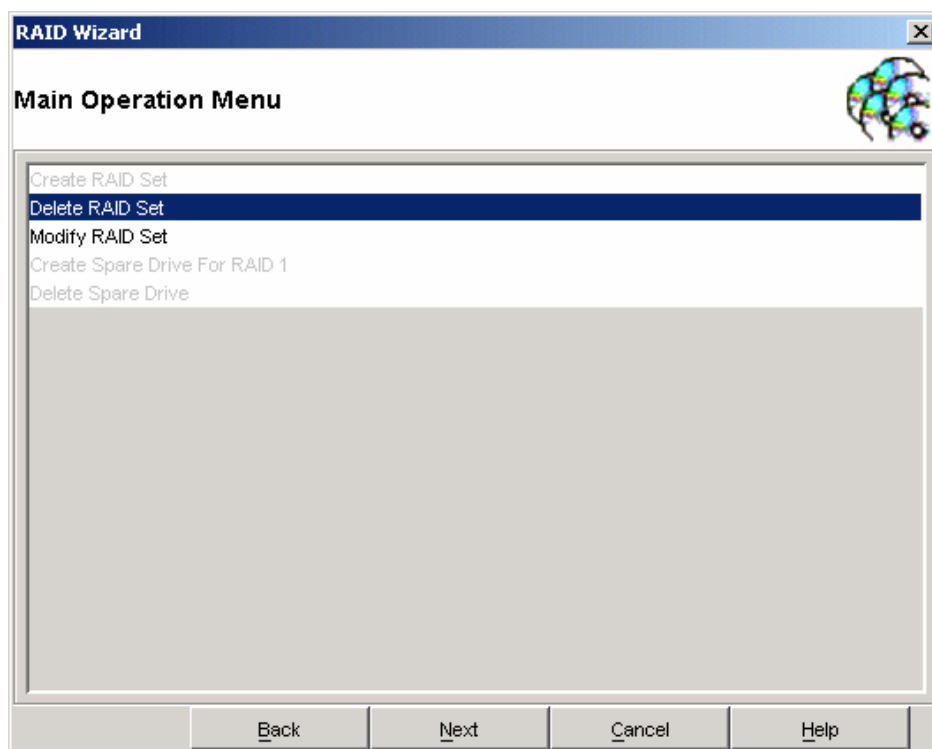
3. An acknowledgement window will appear. Click Finish. A moving bar will appear in the window while the operation is in progress. Once the window closes, the operation is complete. When the window closes, the new RAID Set will appear in the SATARaid window under RAID Sets. After allocating any other RAID sets, you will need to create and format the new partitions. See Section 7 - *Allocating Partitions* for instructions.



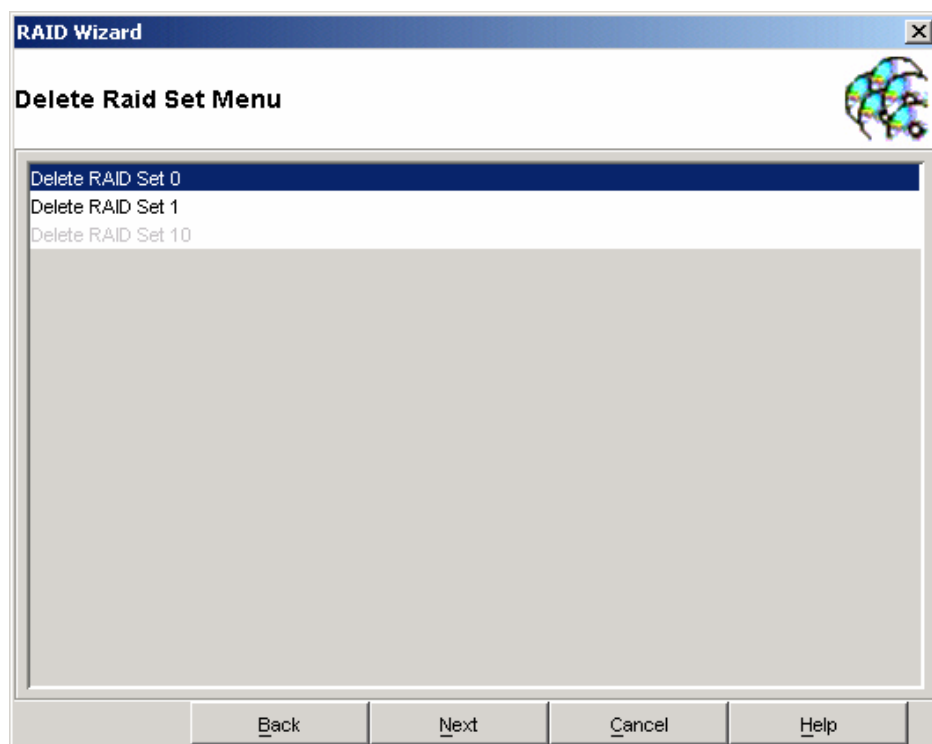
10.2 Deleting RAID Sets

For various reasons it may be necessary or desired to delete an existing RAID Set. The following example shows the deletion of an existing RAID 0 Set.

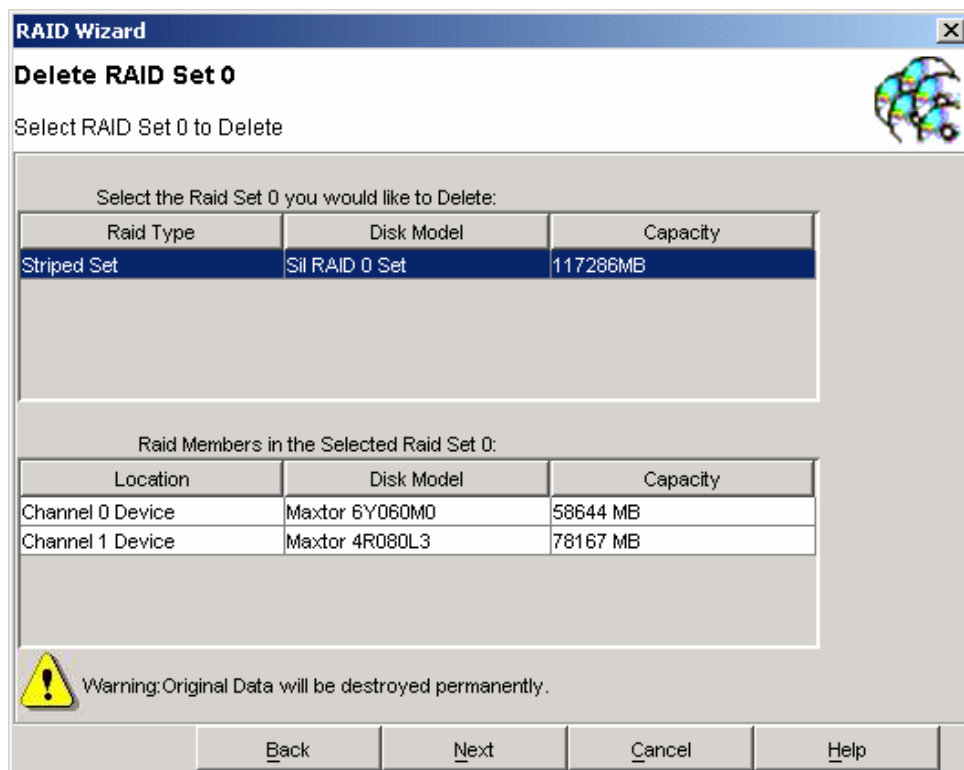
1. Start the RAID Wizard. Select "Delete RAID Set" and click Next.



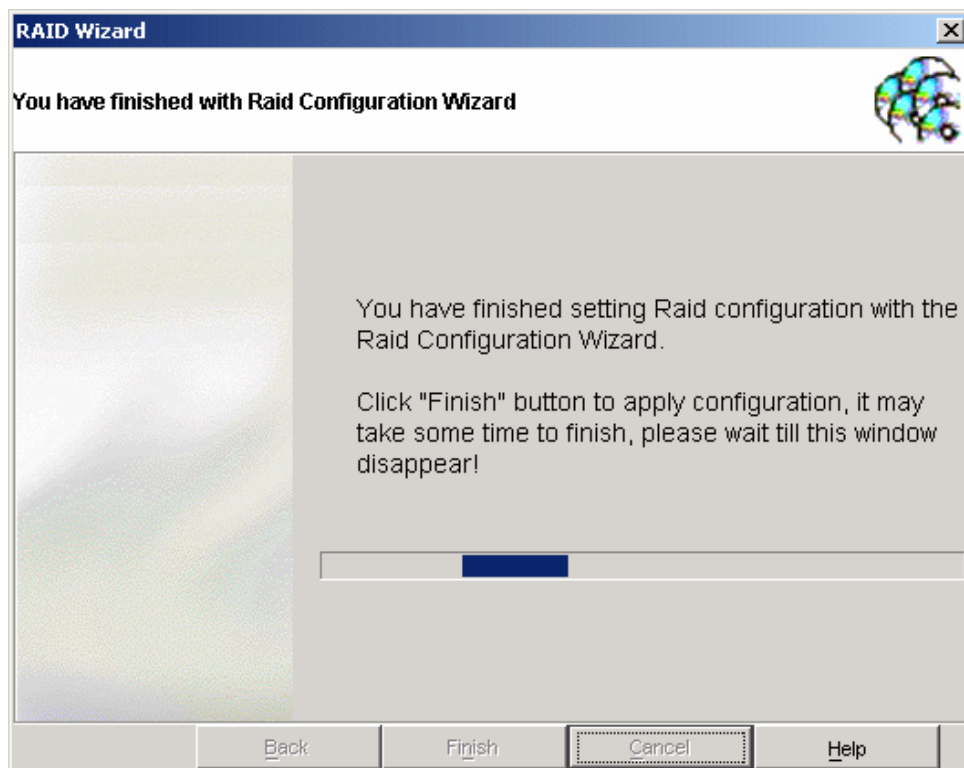
2. Select the type of set to be deleted and click Next.



3. Select the set to be deleted and click Next.



4. An acknowledgement window will appear. Click Finish. A moving bar will appear in the window while the operation is in progress. Once the window closes, the operation is complete.



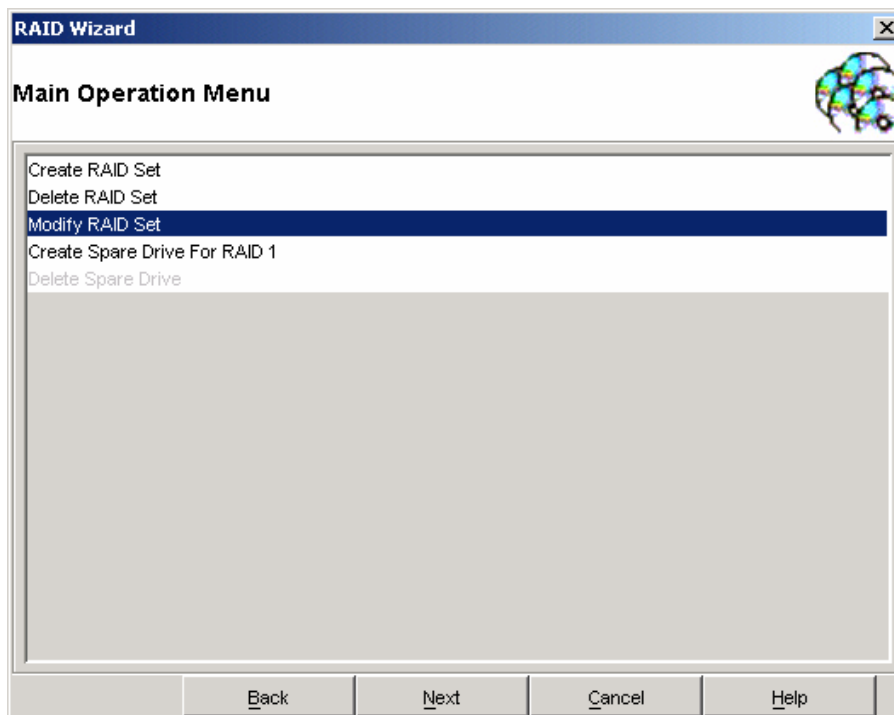
10.3 Modifying RAID Sets

This feature allows the configuration of various settings related to a RAID Set to be adjusted.

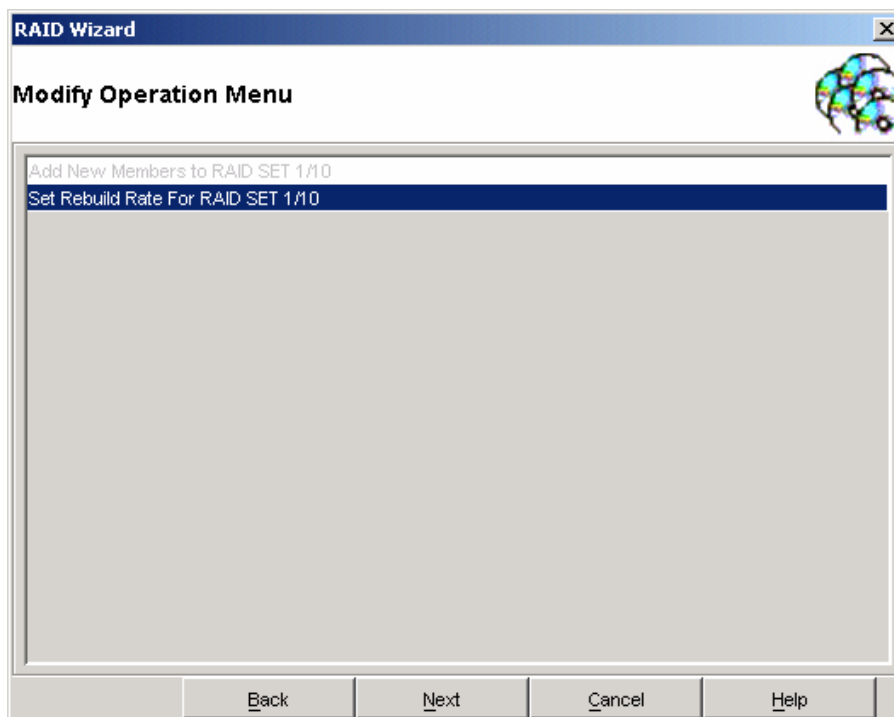
10.3.1 Set Rebuild Rate for RAID Set 1/10

The following example shows the modification of the rebuild rate of a RAID 1 Set.

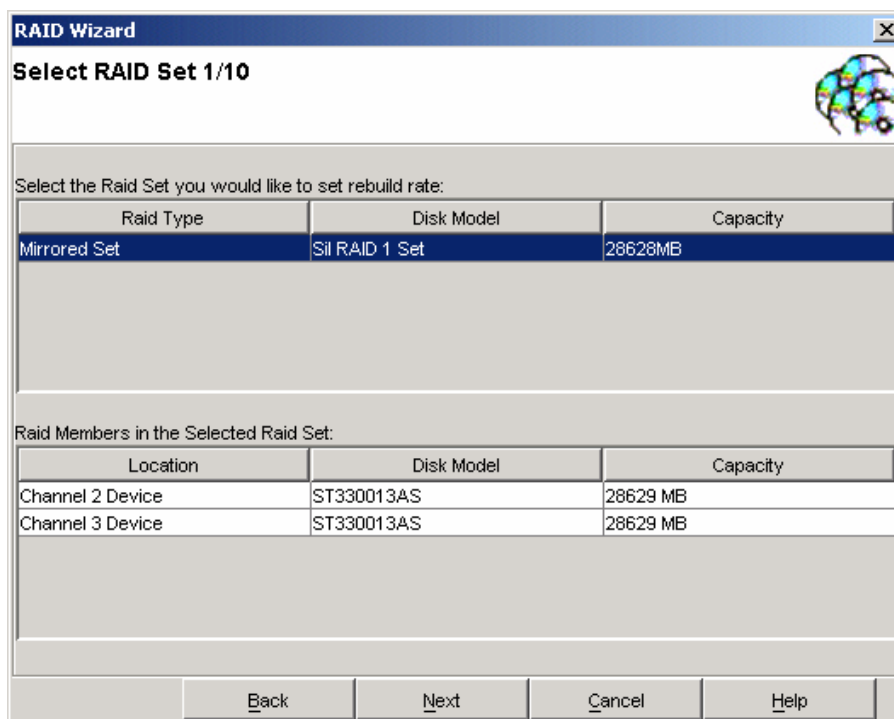
1. Start the RAID Wizard. Select "Modify RAID Set" and click Next.



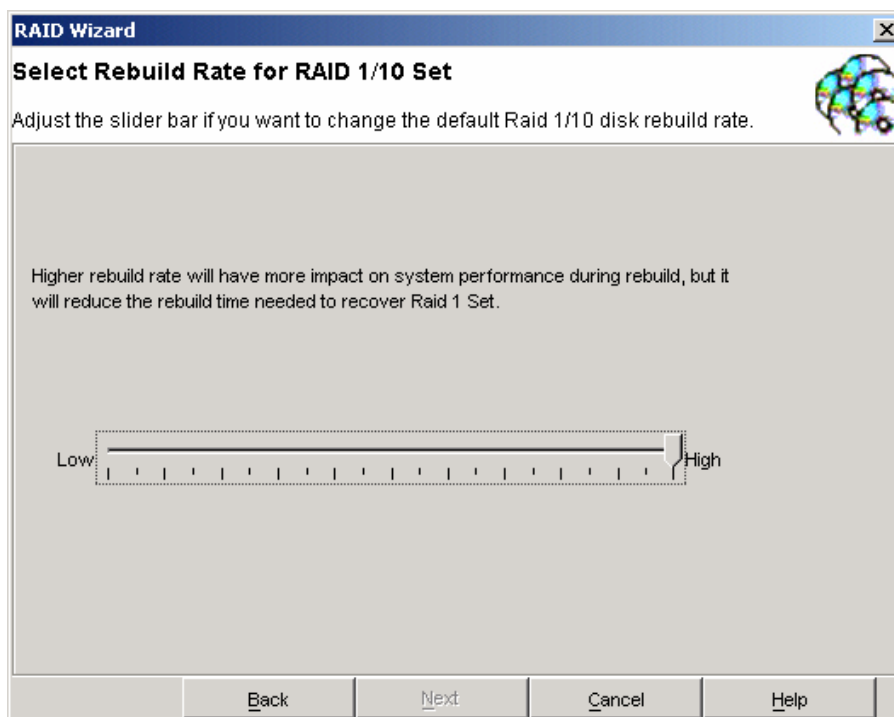
2. Select the operation to be performed and click Next. Only operations that are valid for the selected set will be displayed.



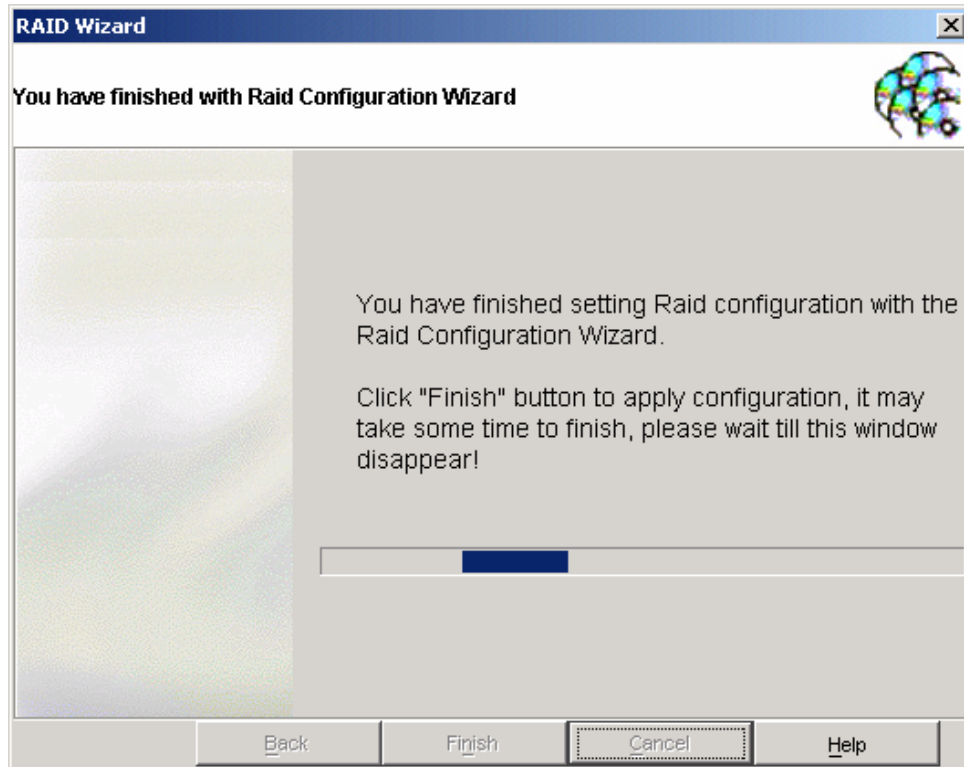
3. Select the set on which the operation is to be applied and click Next.



4. Change the setting as desired. Click Next.



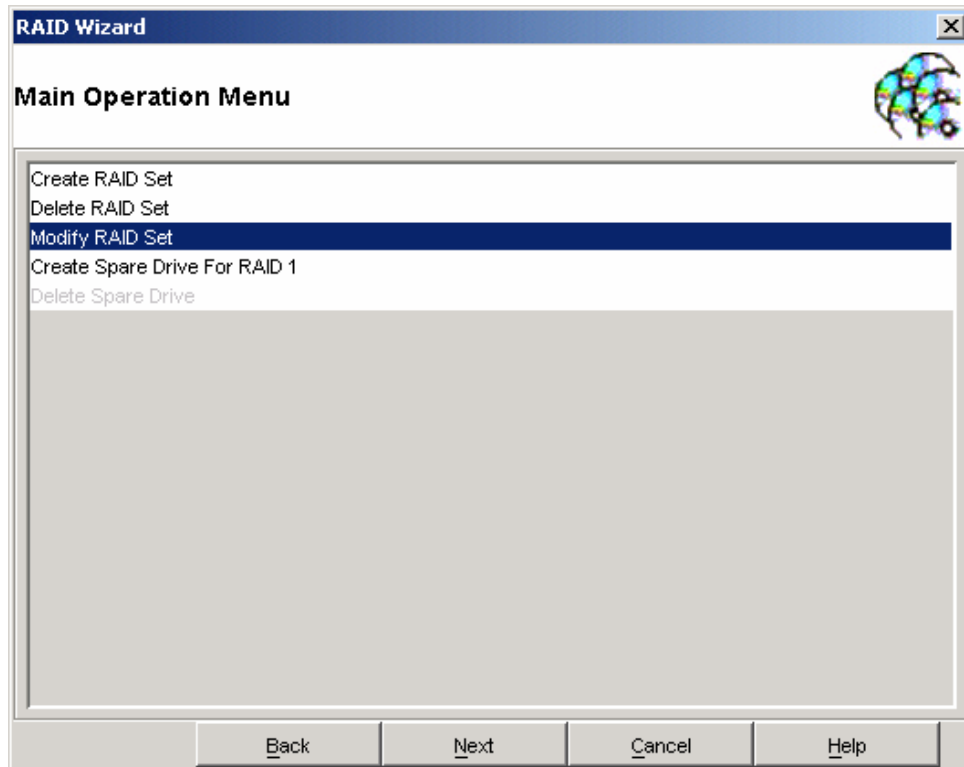
5. An acknowledgement window will appear. Click Finish. A moving bar will appear in the window while the operation is in progress. Once the window closes, the operation is complete.



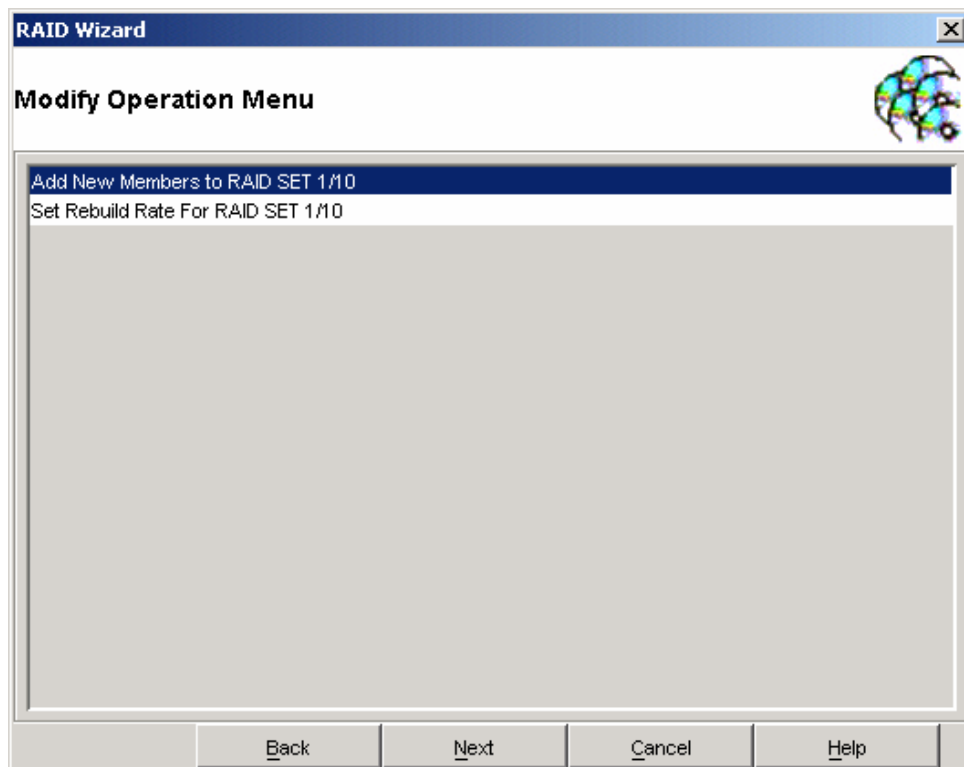
10.3.2 Add New Members to RAID Set 1/10

The following example shows modification of a RAID 1 Set by adding a member.

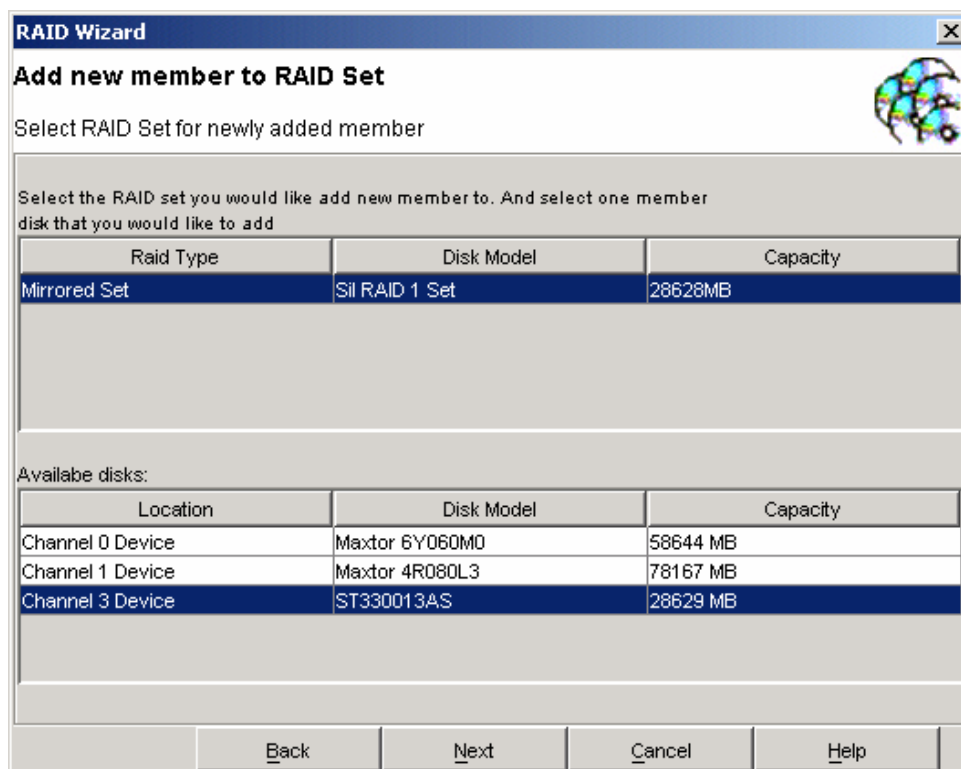
1. Start the RAID Wizard. Select "Modify RAID Set" and click Next.



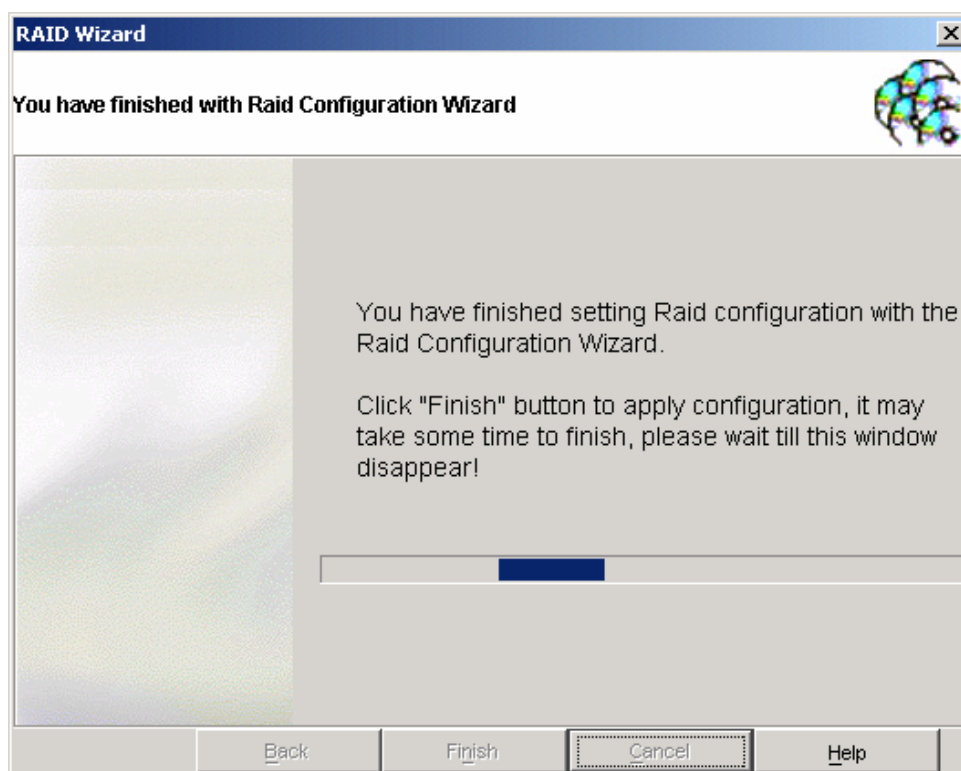
2. Select the operation to be performed and click Next. Only operations that are valid for the selected set will be displayed.



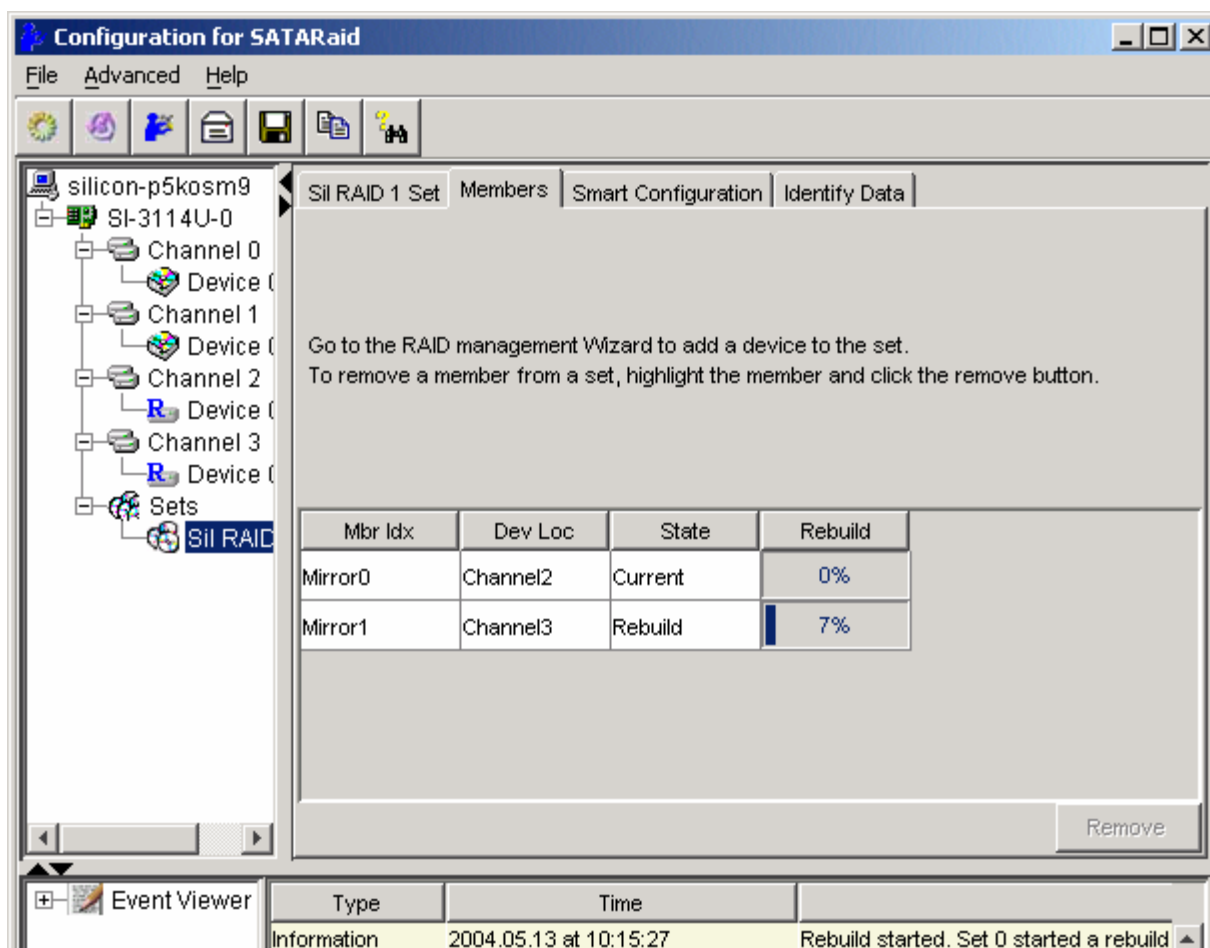
3. Select the set on which the operation is to be applied. Select the device to be added. Click Next.



4. An acknowledgement window will appear. Click Finish. A moving bar will appear in the window while the operation is in progress. Once the window closes, the operation is complete and the system will start rebuilding the new member.



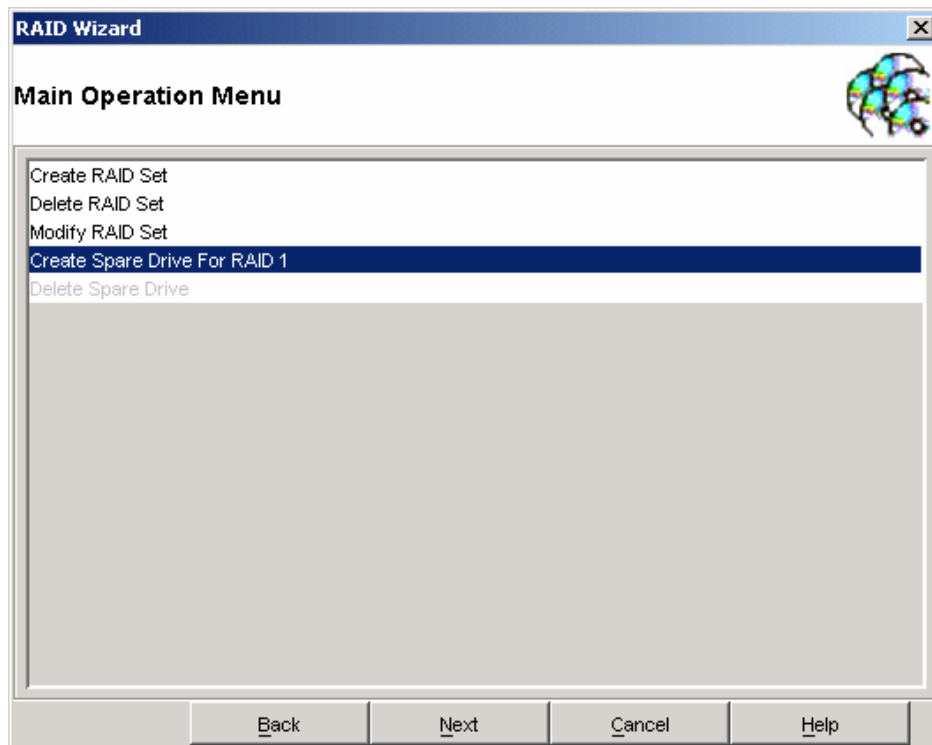
- Return to the SATARaid Main Window. In the Devices window, select the RAID Set to which you have added the device. Select the Members tab for the RAID Set in the Information window. From here, the progress of the RAID Set rebuild can be monitored.



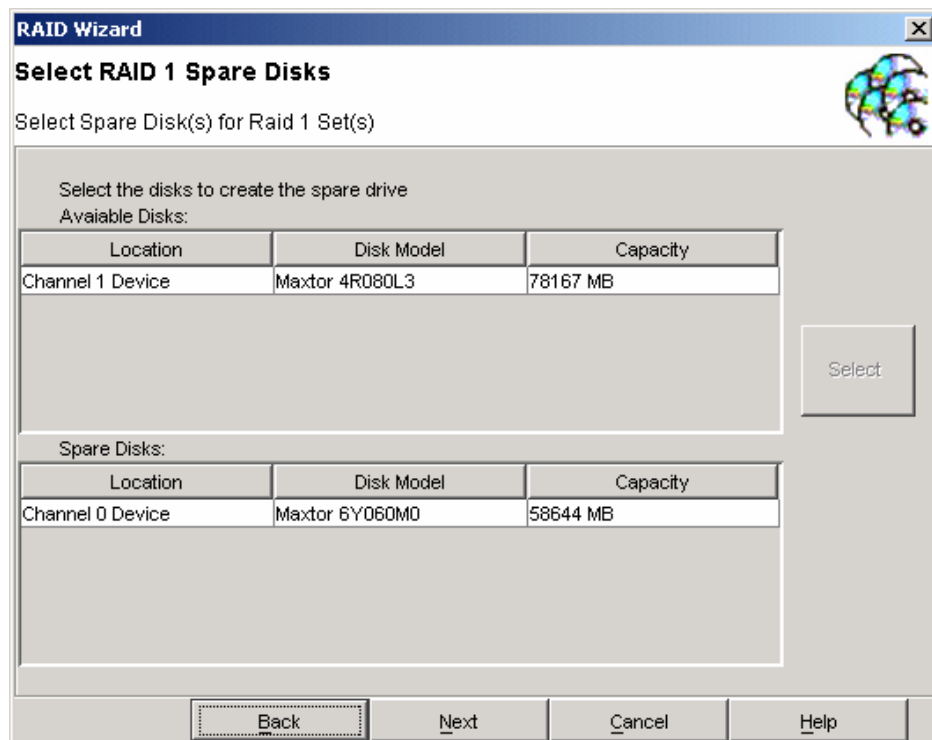
10.4 Creating a Spare RAID 1 Drive

Creating a spare RAID 1 drive allows the spare to be quickly added to an existing RAID 1 set in the event of a catastrophic failure. The following example shows the creation of a RAID 1 spare drive.

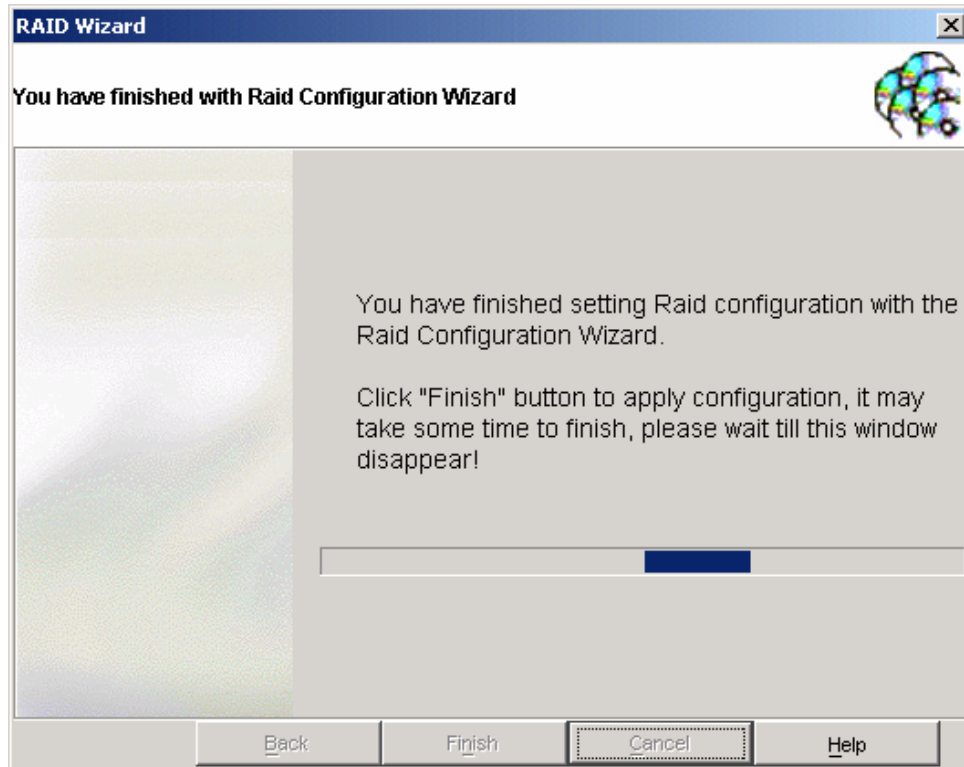
1. Start the RAID Wizard. Select "Create Spare Drive For RAID 1" and click Next.



2. Select the disk to be used to create the spare. Click Select. The drive will be displayed in the Spare Disks window. Click Next.



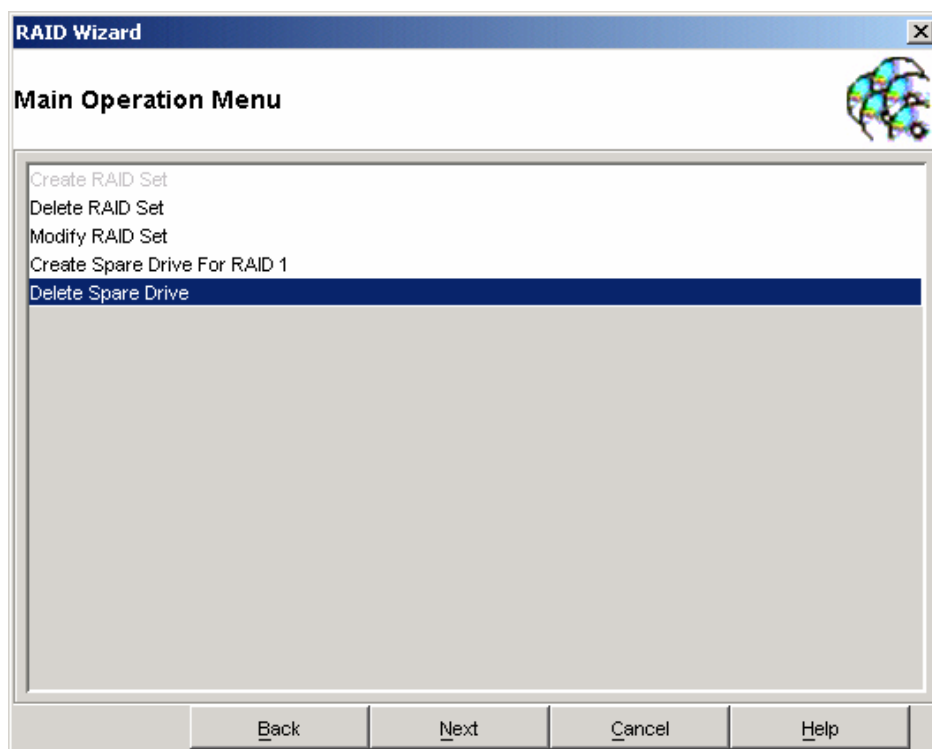
3. An acknowledgement window will appear. Click Finish. A moving bar will appear in the window while the operation is in progress. Once the window closes, the operation is complete.



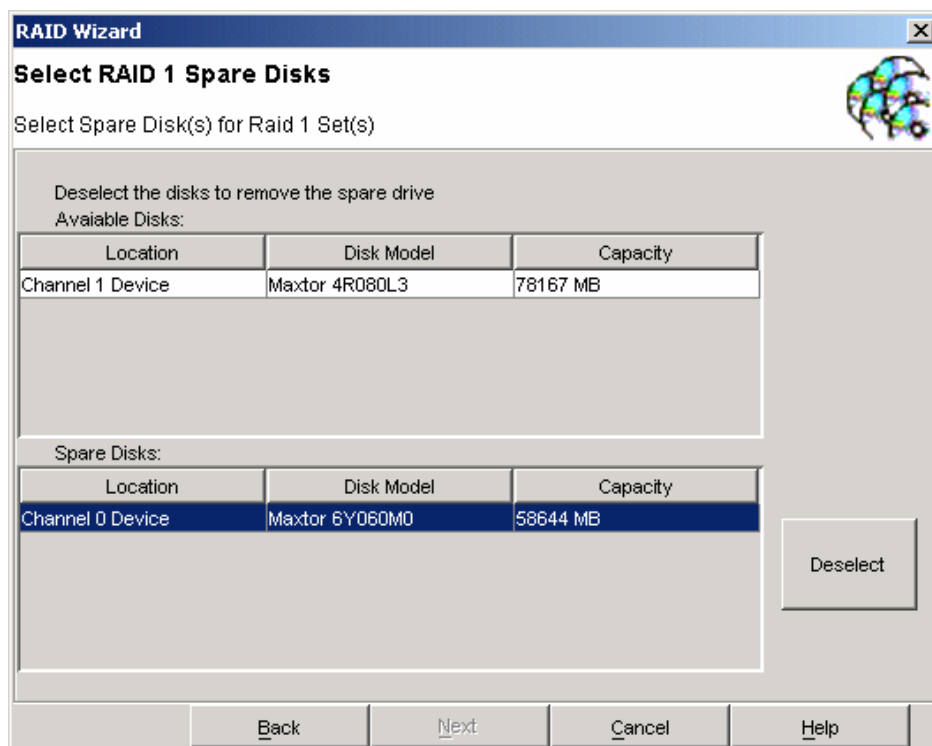
10.5 Deleting a Spare RAID 1 Drive

For various reasons it may be desired or necessary to deallocate a RAID 1 spare drive. The following example shows the deletion of a spare RAID 1 drive.

1. Start the RAID Wizard. Select "Delete Spare Drive" and click Next.



2. Select the drive to be deallocated and click Deselect, then click Next.



3. An acknowledgement window will appear. Click Finish. A moving bar will appear in the window while the operation is in progress. Once the window closes, the operation is complete.

